

HEMPHILL
INDEPENDENT
SCHOOL DISTRICT



EMPLOYEE
HANDBOOK

SCHOOL YEAR
2023-2024

Introduction

The purpose of this handbook is to provide information that will help with questions and pave the way for a successful year. Not all district policies and procedures are included. Those that are have been summarized. All district policies and procedures can be obtained online @ [**http://pol.tasb.org/Home/Index/1045**](http://pol.tasb.org/Home/Index/1045) .

Suggestions for additions and improvements to this handbook are welcome and may be sent to the Superintendent's Office.

This handbook is neither a contract nor a substitute for the official district policy manual. Nor is it intended to alter the at-will status of noncontract employees in any way. Rather, it is a guide to and a brief explanation of district policies and procedures related to employment. District policies and procedures can change at any time; these changes shall supersede any handbook provisions that are not compatible with the change. For more information, employees may refer to the policy codes that are associated with handbook topics, confer with their supervisor, or call the appropriate district office. Policy manuals are accessible online @ <http://pol.tasb.org/Home/Index/1045> or there is a copy available in the Administration Office for employees to review during normal working hours.

Employee handbook receipt

Name _____

Campus/department _____

I hereby acknowledge receipt of a copy of the Hemphill ISD Employee Handbook. I agree to read the handbook and abide by the standards, policies, and procedures defined or referenced in this document.

- ☐ I choose to receive the employee handbook in electronic format and accept responsibility for accessing it at <http://pol.tasb.org/Home/Index/1045>
- ☐ I choose to receive a hard copy of the employee handbook and I understand it is also available on the school's website

The information in this handbook is subject to change. I understand that changes in district policies may supersede, modify, or render obsolete the information summarized in this document. As the district provides updated policy information, I accept responsibility for reading and abiding by the changes.

I understand that no modifications to contractual relationships or alterations of at-will relationships are intended by this handbook.

I understand that I have an obligation to inform my supervisor or department head of any changes in personal information, such as phone number, address, etc. I also accept responsibility for contacting my supervisor or principal if I have questions or concerns or need further explanation.

Signature

Date

Note: Please make a copy of this form then sign and date it and forward it to your supervisor or principal.

Hemphill I.S.D. Emergency Contact Information

The information that you provide will be used ONLY in the event of a medical emergency. Please take the time to fill it out fully and accurately and return it to the Administration Office. A copy will be kept in your employee file and in each campus office.

EMPLOYEE INFORMATION

Last Name	First Name	Middle Initial
Home Address		
City	State	Zip
Phone Number		

MEDICAL CONTACTS

Physician Name
Physician Phone Number
Clinic Name
Hospital Name

Self-identified as being trained in CPR:

No

Yes: **Certification Date:**

Expiration Date:

Comments (special instructions, severe reactions, special conditions, etc.):

CONTACT INFORMATION

Contact #1 Name:
Relationship
Home Contact Information
Address:
Phone:
Work Contact Information
Name of Employer:
Address:
Phone:
Pager/Cell Phone:

Contact #2 Name:
Relationship
Home Contact Information
Address:
Phone:
Work Contact Information
Name of Employer:
Address:
Phone:
Pager/Cell Phone:

Date: _____

Employee Signature _____

TABLE OF CONTENTS

	<u>Page #</u>
COVER PAGE	1
INTRODUCTION	2
HANDBOOK RECEIPT	3
EMERGENCY CONTACT INFO	4
TABLE OF CONTENTS PAGE	5
SUPERINTENDENT'S LETTER	6
HEMPHILL ISD MISSION STATEMENT	7
BOARD OF TRUSTEES	8
ORGANIZATIONAL CHART	9
ORGANIZATION OF SCHOOL STAFF	10
SCHOOL CALENDAR	11
STAFF / PERSONNEL	12 - 20
GENERAL PRACTICES	21 – 23
DISTRICT MAP	24
POLICIES	25 - 80
INDEX	81 - 86
ITEMIZATION OF EXPENSES FORM	87

HEMPHILL INDEPENDENT SCHOOL DISTRICT

P.O. BOX 1950 - HEMPHILL, TX 75948

Phone (409) 787-3371 - Fax (409) 787-4005

Stephen English, Superintendent

Amanda McClelland, Business Manager

STEPHANIE HARKNESS
Elementary Principal

LARRY UPSHAW
Middle School Principal

JEREMY MCDANIEL
High School Principal

TO: Employees of Hemphill I.S.D.
FROM: Stephen English, Superintendent

On behalf of the Board of Trustees and the Administration, it is my pleasure to welcome you to the Hemphill Independent School District for the 2023 – 2024 school year.

The dedication, enthusiasm, and ability of our school staff cannot be matched by any other school district. I am proud of your past accomplishments and remain confident that, working together, we will continue to provide the students of Hemphill Independent School District the best educational environment possible.

This publication has been prepared to answer some of your questions and provides for the smooth operation of our district. Several policies are included in this publication for your convenience and complete District Policy Manuals are now available online @ <http://pol.tasb.org/Home/Index/1045>.

We hope you will have a rewarding and enjoyable year.

Sincerely,

Stephen English
Superintendent of Schools
Hemphill Independent School District

HEMPHILL I.S.D. MISSION STATEMENT

THE MISSION OF THE HEMPHILL
INDEPENDENT SCHOOL DISTRICT
IS TO EQUIP ALL STUDENTS, IN A
SAFE LEARNING ENVIRONMENT,
WITH THE SKILLS NECESSARY TO
LEAD PRODUCTIVE AND
SATISFYING LIVES.

Board of Trustees
Policies BA, BB series, BD series, and BE series

Texas law grants the Board of Trustees the power to govern and oversee the management of the district’s schools. The Board is the policy-making body within the district and has overall responsibility for the curriculum, school taxes, annual budget, employment of the Superintendent and other professional staff, and facilities. The Board has complete and final control over school matters within limits established by state and federal laws and regulations.

The Board of Trustees is elected by the citizens of the district to represent the community’s commitment to a strong educational program for the district’s children. Board members are elected annually and serve 3-year terms. Board members serve without compensation, must be qualified voters, and must reside in the district.

<u>BOARD MEMBERS</u>		
KIM SCALES	-----	PRESIDENT
CARL BEALL JR	-----	VICE-PRESIDENT
ANDREA PROCELLA-HESLIP	-----	SECRETARY
TAMMIE COX	-----	MEMBER
MARTY GRIFFIN	-----	MEMBER
GARY R PARKS	-----	MEMBER
DALE WILKERSON	-----	MEMBER

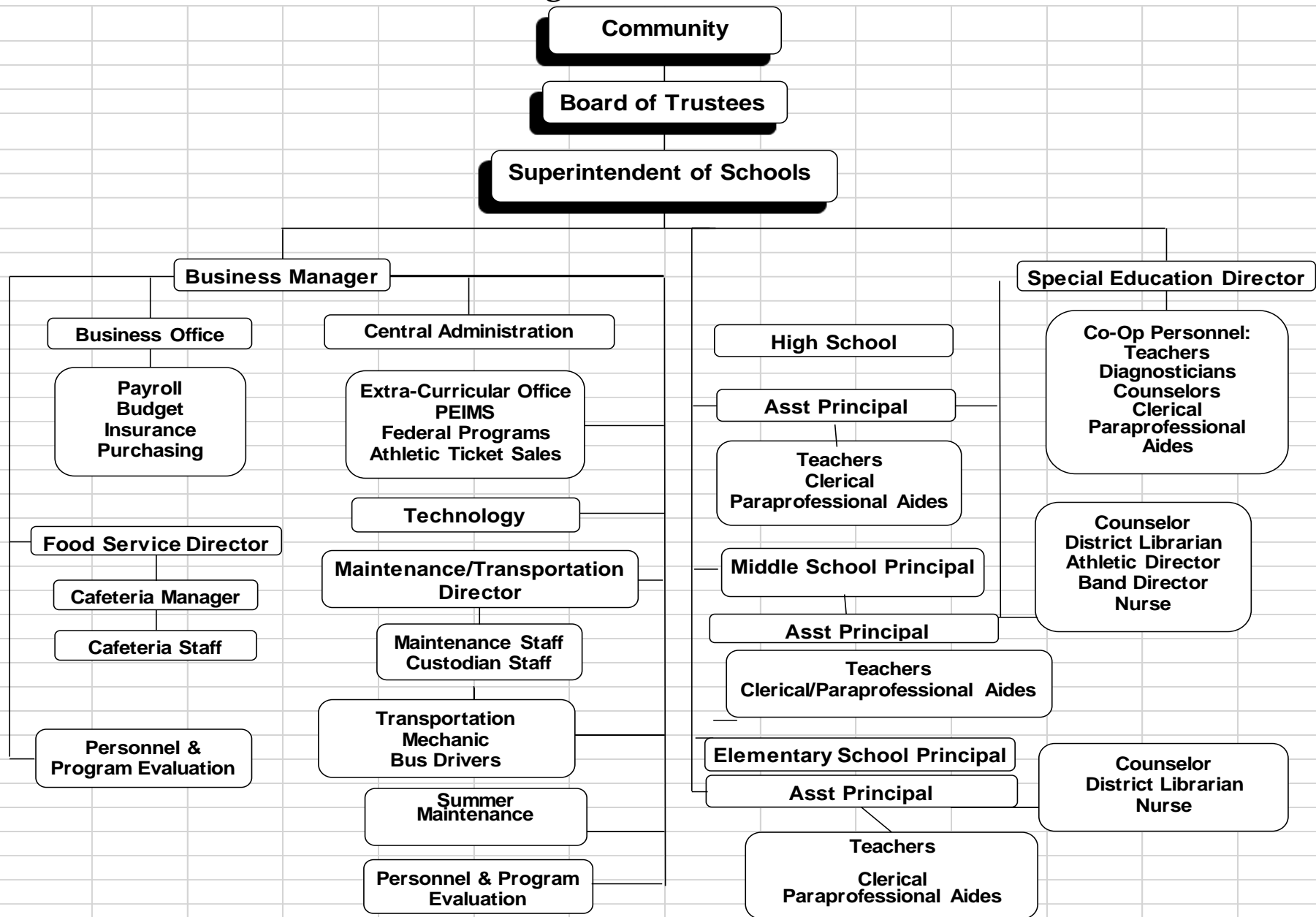
Trustees meet monthly in the Hemphill ISD Administration Building. Special meetings may be called when necessary. A written notice of regular and special meetings will be posted on the district website and Administration Building front door at least 72 hours before the scheduled meeting time. The written notice will show the date, time, place, and subjects of each meeting. In emergencies, a meeting may be held with a one-hour notice.

All meetings are open to the public. In certain circumstances, Texas law permits the Board to go into a closed session from which the public and others are excluded. Closed session may occur for such things as discussing prospective gifts or donations, real property acquisition, certain personnel matters including employee complaints, security matters, student discipline, or consulting with attorneys regarding pending litigation.

Board meeting schedule for 2023–2024 will be: *These meetings are subject to change.

August 29	February 15
September 18	March 21
October 16	April 18
November 16	May 16
December 18	June 20
January 18	July 18

Hemphill Independent School District Organizational Chart



Organization of School Staff

The following paragraphs will show the organization of the school staff and describes their responsibilities and relationship to each other.

The Board of Trustees is the top-level governing body for the school district, responsible for formulating basic legislation and policies for the operation of the schools. The Board is responsible for making decisions, which result in providing the necessary finances for the operation of the district.

The Superintendent of Schools is directly responsible to the Board, and has the task of the overall management of the district. He acts as the executive officer for the Board, and has responsibility in matters of financial and property management for the schools. He has broad responsibility for formulating the program of instruction and for interpreting the schools and their work to the community, including personnel evaluations, custodial services and staff, plant maintenance, transportation, technology, computer services, all support services, custodial services, rental of school facilities, Co-Op programs, pest control management, and asbestos coordinator.

The Business Manager is responsible directly to the Superintendent. The areas of responsibility delegated to this position include: Business Office staff, payroll, budget, insurance, purchasing, district food service, PEIMS, athletic ticket sales, Federal programs.

Directly responsible to the Superintendent are the principals, who are responsible for the supervision of pupil and staff personnel. They direct a program of school evaluation and are responsible for a guidance program. They are responsible for the instructional program in their school.

The principals of each school are assisted in their work by counselor, librarian, testing coordinator/special programs, and subject area or grade level chairperson.

The basic units for instruction in the school system are the classroom teachers. They have as their jobs the direction of learning activities and classroom management. The classroom teacher plays an important part in the guidance program and in the school's relations with the pupils and parents.

The Hemphill District is built upon the principle that the success of the educational enterprise rests upon the effectiveness of the classroom teacher.

Guided by the purposes and policies of the school district, the teacher directs the learning activities of a group of pupils. Within this framework, the teacher is encouraged to make full use of this personal judgment and initiative, their mastery of subject matter, and their knowledge of children and youth.

Support personnel play a vital and important part toward developing the best educational environment possible. Those employees have a role of supporting the classroom teacher in order for our students to have the opportunity to receive the best education possible.

Hemphill ISD 2023-2024 Calendar

July 2023						
Su	M	Tu	W	Th	F	Sa
						1
2	3	4	5	6	7	8
9	10	11	12	13	14	15
16	17	18	19	20	21	22
23	24	25	26	27	28	29
30	31					

August 2023						
Su	M	Tu	W	Th	F	Sa
		1	2	3	4	5
6	7	8	9	10	11	12
13	14	15	16	17	18	19
20	21	22	23	24	25	26
27	28	29	30	31		

September 2023						
Su	M	Tu	W	Th	F	Sa
					1	2
3	4	5	6	7	8	9
10	11	12	13	14	15	16
17	18	19	20	21	22	23
24	25	26	27	28	29	30

October 2023						
Su	M	Tu	W	Th	F	Sa
1	2	3	4	5	6	7
8	9	10	11	12	13	14
15	16	17	18	19	20	21
22	23	24	25	26	27	28
29	30	31				

November 2023						
Su	M	Tu	W	Th	F	Sa
			1	2	3	4
5	6	7	8	9	10	11
12	13	14	15	16	17	18
19	20	21	22	23	24	25
26	27	28	29	30		

December 2023						
Su	M	Tu	W	Th	F	Sa
					1	2
3	4	5	6	7	8	9
10	11	12	13	14	15	16
17	18	19	20	21	22	23
24	25	26	27	28	29	30
31						

July	
Regular Day 7:50-3:30 (460 minutes)	
Early Release 7:50-1:00 (310 minutes)	
PLC Release 7:50-2:30 (460 minutes with waiver)	
26,27,28 New Teacher/Exchange Day/Inservice	
31 Teacher Inservice	
4 Teacher Days	

August	
1-4 Teacher Inservice	
7-8 Teacher Inservice	
9 First Day of School	
16,23,30 PLC Release	
17 Student Days 7820 Minutes	
23 Teacher Days	

September	
4 Labor Day/School Holiday	
22 End of 1st Grading Period	
25 Teacher Workday	
26 Begin 2nd Grading Period	
13-20 PLC Release	
19 Student Days 8740 Minutes	
20 Teacher Days	

October	
6,9 School Holiday	
18,25 PLC Release	
* half day release for homecoming	
TBD Early Release for Homecoming	
20 Student Days 9050 Minutes	
20 Teacher Days	

November	
3 End of 2nd Grading Period	
20-24 School Holiday	
17 Early Release	
1,29 PLC Release	
6,7 Teacher workday/begin 3rd grading period	
16 Student Days 7210 Minutes	
17 Teacher Days	

December	
6,13 PLC Release	
20 End of 3rd Grading Period/Early Release	
21-31 School Holiday	
14 Student Days 6290 Minutes	
14 Teacher Days	
39,110 Minutes in 1st Semester	

January 2024						
Su	M	Tu	W	Th	F	Sa
	1	2	3	4	5	6
7	8	9	10	11	12	13
14	15	16	17	18	19	20
21	22	23	24	25	26	27
28	29	30	31			

February 2024						
Su	M	Tu	W	Th	F	Sa
				1	2	3
4	5	6	7	8	9	10
11	12	13	14	15	16	17
18	19	20	21	22	23	24
25	26	27	28	29		

March 2024						
Su	M	Tu	W	Th	F	Sa
					1	2
3	4	5	6	7	8	9
10	11	12	13	14	15	16
17	18	19	20	21	22	23
24	25	26	27	28	29	30
31						

April 2024						
Su	M	Tu	W	Th	F	Sa
	1	2	3	4	5	6
7	8	9	10	11	12	13
14	15	16	17	18	19	20
21	22	23	24	25	26	27
28	29	30				

May 2024						
Su	M	Tu	W	Th	F	Sa
			1	2	3	4
5	6	7	8	9	10	11
12	13	14	15	16	17	18
19	20	21	22	23	24	25
26	27	28	29	30	31	

June 2024						
Su	M	Tu	W	Th	F	Sa
						1
2	3	4	5	6	7	8
9	10	11	12	13	14	15
16	17	18	19	20	21	22
23	24	25	26	27	28	29
30						

January	
1-4	School Holiday
5	Teacher Workday
8	Begin 4th Grading Period/2nd Semester
15	School Holiday
10,24,31	PLC Release
17	Student Days 7820 Minutes
18	Teacher Days

February	
7	PLC Release
16	End of 4th Grading Period/Early Release
19-23	School Holiday
26	Teacher Workday
27	Begin 5th Grading Period
15	Student Days 6750 Minutes
16	Teacher Days

March	
15	Exchange Day
6,13,20,27	PLC Release
29	bad weather day
19	Student Days 8740 Minutes
19	Teacher Days

April	
5	End of 5th Grading Period/Early Release
8-12	School Holiday
15	Teacher Workday
16	Begin 6th Grading Period
26	PLC Release
16	Student Days 7210 Minutes
17	Teacher Days

May	
3,10,17	PLC Release
23	End of 6th Grading Period/Early Release
24	Teacher Workday/Weather Day/Graduation
17	Student Days 7670 Minutes
18	Teacher Days 187 Teacher Days for Year
38190	Minutes in 2nd semester
77300	Minutes in School Year

June	
Approved 4/20/23	

From time to time, employees have questions or concerns. If those questions or concerns cannot be answered by supervisors or at the campus or department level, the employee is encouraged to contact the appropriate department as listed below.

CENTRAL OFFICE
787-3371

Stephen English -----	Superintendent - Ext. 2102
Amanda McClelland -----	Business Manager - Ext. 2103
Kelli Barnett -----	Supt.'s Secretary - Ext. 2101
Belinda Gay -----	Payroll/PEIMS – Ext. 2105
Daphane Dyer -----	Acct. Payable – Ext. 2104

TECHNOLOGY DEPARTMENT
787-3371

Eric Heslip-----	Director - Ext. 2501
------------------	----------------------

HIGH SCHOOL
Grades 9-12
787-3371

Jeremy McDaniel-----	Principal - Ext. 2202
Jeremy Wallace-----	Asst Principal – Ext. 2205
Belinda Ancelot -----	Counselor - Ext. 2206
Angie McMillian-----	Clerical/Telephone - Ext. 2201
Annette Carranza -----	Principal's Secretary - Ext. 2203
Kim Westbrook -----	Attendance/Registrar - Ext. 2204
Sandra Easley-----	Special Programs – Ext. 2270

MIDDLE SCHOOL
Grades 5-8
787-3371

Larry Upshaw -----	Principal - Ext. 2302
Lane Cook-----	Asst Principal – Ext. 2512
Belinda Ancelot -----	Counselor -Ext. 2206
Mary Ann Briggs-----	Counselor – Ext. 2424
Marsha Williams -----	Principal's Secretary - Ext. 2301
Deborah Salyers-----	Office Clerk – Ext. 2303

ELEMENTARY SCHOOL
Grades PK-4
787-3371

Stephanie Harkness -----	Principal - Ext. 2402
Amanda Smith-----	Asst Principal – Ext. 2425
Mary Ann Briggs -----	Counselor Ext. 2425
Ginger Nethery -----	Clerical/Telephone - Ext. 2401
Dawana Birdwell -----	Principal's Secretary - Ext. 2403

SPECIAL EDUCATION

787-2338

Cassy Whitsitt-----	Director
Bobbie Strickland-----	Diagnostician
Sandy Hanks -----	Secretary
Shelley Fisette -----	Diagnostician
Lucinda Jones-----	Diagnostician
Collette Hanzel-----	Speech Pathologist
Erica Powell-----	Speech Pathologist Asst.

CAFETERIA

787-3371

Kathleen Henson -----	Food Service Dir. - Ext. 2518
-----------------------	-------------------------------

MAINTENANCE/TRANSPORTATION

787-2444

Shannon Crowell-----	Trans. Dir. – Ext. 2352
Danny Davis-----	Maint Dir. – Ext. 2513

ELEMENTARY SCHOOL FACULTY

Meleesa Davis -----	Pre-K
Maggie Hadnot-----	Pre-K
Brittany Laurence-----	Pre-K
Morgan Hart-----	Kindergarten
Jennifer Moody-----	Kindergarten
Marcie Welch-----	Kindergarten
Dola Greer-----	1 st
Jamison Hampton-----	1 st
Robyn Martin-----	1 st
Jessica Pickard-----	1 st
Denise Eddings-----	2 nd
Daija Outerbridge-----	2 nd
Kennedey Parker -----	2 nd
Jonni Chance-----	3 rd
Anna Jackson-----	3 rd
Lea Noble-----	3 rd
Stacy Harris-----	4 th
Sharla Persails -----	4 th
Heather Phillips -----	4 th
Becky Smith-----	4 th
Kari Hoelscher-----	Math Intervention
Nikki Walton-----	Reading Intervention
Lillian Johnson-----	Reading Intervention/Dyslexia
Heather Phillips-----	G/T 1 st -4 th
Mary Ann Briggs -----	Counselor
Shay Lane-----	Special Education
Amanda Smith-----	Asst. Principal
Roderica Johnson -----	Life Skills
Teneeshia Williams-----	PE
Lori Henderson-----	Music / Art
Patsy Vlasek-----	Storytelling/Keyboarding

MIDDLE SCHOOL FACULTY

Belinda Ancelot-----	Counselor
Mindy Ashen-----	Science – 6 th
Cade Billeaud-----	Inclusion / Athletics
Mary Ann Briggs-----	Counselor
Werner Burwood-----	Texas History, Civics
Janice Carroll-----	Math – 5 th
Gaylan Chadwick-----	Life Skills Teacher
Jessica Clark-----	Math – 6 th
Susan Conn-----	Inclusion
Lane Cook-----	Assistant Principal
Cheyenne Cooper-----	Band – 5 th , 6 th , 7 th
Nicole Corley-----	U S History – 8 th , Elective Block
Bridget Different-----	Science – 8 th STEAM
Mackenzie Dockens-----	PE 5 th , 6 th , 7 th , 8 th , Athletics
Dena Dowden-----	Algebra 1 – 8 th
Phillip Ebarb-----	Social Studies – 6 th , Athletics
Stephanie Elliott -----	PE 6 th 7 th 8 th , Health
Heidy Griffin-----	Art – 8 th
Kaylee Hancock-----	Science – 7 th
Trinity Hughes-----	RTI Teacher / ISS / Athletics
Andrea Jordan-----	Social Studies – 5 th
Jackie Korman-----	English – 7 th / GT
Amber McGee-----	Math – 7 th
Amanda Meza -----	Math – 8 th
Heather Moody-----	ELA 6 th
Kayla Myers-----	Band 8 th
Lana Procella-----	Ag – 8 th
Kelly Reynolds-----	English LA – 5 th
Sarah Scroggins-----	Science – 5 th
Tod Stark-----	Athletic Director
Kristie Vick-----	Spanish – 8 th
Sunny Whittington-----	RTI Coordinator / ESL Teacher / Dyslexia
Gary Wilson-----	DAEP
Larry Upshaw-----	Principal

HIGH SCHOOL FACULTY

Belinda Ancelot -----	Counselor
Jeff Ashen -----	ISS, Athletics
Karen Bennett -----	Biology, IPC
Dana Bundy -----	U S History, Government, Cheer
Sandra Butler -----	Career Prep, Business, Economics, College Study
Gabriela Carvajal -----	Spanish II, III, IV
James Coleman -----	World Geography, Athletics
Cheyenne Cooper -----	Asst Band Director
Merideth Diggles -----	Girls Coordinator, PE
Dena Dowden -----	Algebra 1, Independent Study Math
David Eddings -----	Agriculture, CTE
Carrie English -----	Geometry, Algebraic Reasoning
Nina Farrell -----	Algebra II, Statistics, College Algebra College Study
Tristan Freeman -----	English I, Independent Study English
Christa Gibbs -----	Content Mastery, Journalism
Heidy Griffin -----	Art, Ceramics
Michael Harris -----	World History, Athletics
Gatlen Hawkins -----	Chemistry, Aq Science
Dorothy Henson -----	Financial Math, Business, CTE
Angela Iles -----	English III, IV, Theatre
Kristi McDaniel -----	Family & Consumer Sciences, Career Prep
Alex McSwain -----	Physics, Ant & Psy, Physics, Principles Of Health Science
Kayla Myers -----	Band Director, Applied Music
Stephanie Parnell -----	Life Skills
Lana Procella -----	Agriculture, CTE
Tod Stark -----	Athletic Director
Kristie Vick -----	Spanish I, II Honors, ESL
Jeremy Wallace -----	Asst. Principal
Lea Warren -----	English II, III, College English

ELEMENTARY PARAPROFESSIONALS

Cornelia Allen-----	Paraprofessional
Jasmine Blake-----	Medically Fragile Nurse
Cecily Bridges-----	Nurse
Michell Buck-----	Paraprofessional
LaDonna Clark-----	Paraprofessional
Amy Cook-----	Paraprofessional Life Skills
Kate Courville-----	Library Aide
Tammy DuBose-----	Paraprofessional Life Skills
Reggie Parks-----	Paraprofessional PE
Brandy Reynolds-----	Paraprofessional
Chloe Schafer-----	Paraprofessional Life Skills
Patricia Snodgrass-----	Paraprofessional Life Skills
Tammy Zappos-----	Nurse

MIDDLE SCHOOL PARAPROFESSIONALS

Jennifer Alonzo-----	Paraprofessional
Glenda Burwood-----	Paraprofessional Life Skills
Mickey Smith-----	Paraprofessional
Jessika Woods-----	Paraprofessional Life Skills

HIGH SCHOOL PARAPROFESSIONALS

Sandra Easley-----	Library Aide
Tineshia Green-----	Paraprofessional Life Skills
Amanda Merritt-----	Paraprofessional Life Skills
Lana Presley-----	Paraprofessional Life Skills
Garison Vanya-----	Paraprofessional

ELEMENTARY GRADE LEVEL CHAIRPERSONS

*** ATTENDANCE COMMITTEE:** Stephanie Harkness, Mary Ann Briggs, Amanda Smith and Grade Level Teacher

*** PLACEMENT REVIEW COMMITTEE:** Amanda Smith, Mary Ann Briggs, Stephanie Harkness, and Grade Level Teacher

***504 DYSLEXIA COMMITTEE:** Stephanie Harkness, Lillian Johnson, Grade Level Teacher, and Diagnostician

***SAT/RTI:** Stephanie Harkness, Grade Level Teacher, Diagnostician, Mary Ann Briggs , Sunny Whittington

***DISTRICT SITE-BASED COMMITTEE:** Heather Phillips, Lillian Johnson, Stephanie Harkness

CAMPUS SITE-BASED COMMITTEE: Meleesa Davis, Jessica Pickard, Lea Noble, Sharla Persails, Amanda Smith, Stephanie Harkness, Mary Ann Briggs, Shay Lane

G/T COMMITTEE: Stephanie Harkness

MIDDLE SCHOOL

*** ATTENDANCE COMMITTEE:** Sunny Whittington, Larry Upshaw, Deborah Salyers

*** PLACEMENT REVIEW COMMITTEE:** Larry Upshaw, Counselor, Lane Cook, Susan Conn, Student's Teacher

*** SITE-BASED COMMITTEE:** Jessica Clark, Larry Upshaw, Kelly Reynolds, Lori Corbello, Susan Conn, Stephanie Elliott, Lane Cook

*** 504 DYSLEXIA COMMITTEE:** Larry Upshaw, Student's Teacher, Susan Conn, Counselor, Sunny Whittington, Lane Cook

*** VERTICAL TEAMING COMMITTEE:** Larry Upshaw, Counselor, Sunny Whittington, Jessica Clark

*** G/T COMMITTEE:** Larry Upshaw, Counselor, Kelly Reynolds

*** DISTRICT SITE-BASED COMMITTEE:** Sunny Whittington, Heather Moody

***SAT/RTI:** Counselor, Grade Level Teacher, Susan Conn, Diagnostician, Sunny Whittington

HIGH SCHOOL DEPARTMENT CHAIRPERSONS

* **ATTENDANCE COMMITTEE:** Jeremy McDaniel, Kim Westbrook, Jeremy Wallace

* **PLACEMENT REVIEW COMMITTEE:** Jeremy McDaniel

* **SCHOLARSHIP COMMITTEE:** Jeremy McDaniel, Belinda Ancelot, Nina Farrell, Kristi McDaniel

* **DYSLEXIA COMMITTEE:** Jeremy McDaniel, Belinda Ancelot, Student's Parent or Teacher

* **G/T COMMITTEE:** Jeremy McDaniel, Belinda Ancelot, Kristi McDaniel

* **SECTION 504 COMMITTEE:** Jeremy McDaniel, Belinda Ancelot, Student's Parent or Teacher

* **TEXTBOOK COMMITTEE:** Teachers whose books are up for adoption

* **CAMPUS SITE-BASED COMMITTEE:** Jeremy McDaniel, Jeremy Wallace, Heidy Griffin, Christa Gibbs, Sandra Butler, Angela Iles, Lea Warren, Jeremy Eells – Bus Rep, Tana Sepulvado – Parent, Debbie Impson – Comm Rep

2023 – 2024 DISTRICT SITE-BASED COMMITTEE

Jonni Worrell, Elementary
Heather Phillips, Elementary
Sunny Whittington, Middle School
Heather Moody, Middle School
Dana Bundy, High School
Stephanie Wilkerson, Business Representative
Debbie Impson, Business Representative
Jeremy Eells, Business Representative
Tana Sepulvado, High School Parent
Belinda Ancelot, Counselor
Cassy Whitsitt, Special Education Director
Stephanie Harkness, Principal
Jeremy McDaniel, Principal
Larry Upshaw, Principal
Stephen English, Superintendent

SPECIAL SERVICES

Director of Transportation----- Shannon Crowell

Director of Maintenance----- Danny Davis

Maintenance & Transportation Secretary----- Donna Dupre

Maintenance Workers -----

Perry Brown
Joe Walker
Claude Ward

Custodians ----- Angela Bellett
Nicole Perry
Andrea Bozeman
Beatriz Castor
Samuel DuBose
Susana Lopez
Toby Rothen
Daniel Nydam

Bus Drivers -----

Perry Brown
Kathy Champagne
Tammy DuBose
Donna Dupree
David Eddings
Reggie Parks
Joe Walker

Food Service Director----- Kathleen Henson

Cafeteria Workers ----- Katherine Vega-Castor
Frances Clark
Shirley Dupree
Tammy Ener
Monica Hackler
Vernell Holman
Angie Lowe
Julie Scott

GENERAL POLICIES AND PROCEDURES

All practices and policies that have been established by the Hemphill Independent School District affect the instructional program either directly or indirectly. High priority is placed on cooperation, attitude, professionalism and enthusiasm. There is a prevailing atmosphere that, not only permits, but, encourages progress, change and innovations for the promotion, development and continuous improvement of the effectiveness, quality and relevancy of the instructional program.

It is imperative in this district that the employees form a cooperative team, and concentrate all efforts toward providing an outstanding educational program for the students of this community. Sincere efforts must be made to maintain this relationship and singleness of purpose, which is essential in keeping this district the outstanding educational institution it is.

The school day for teachers is from 7:45 a.m. until 3:45 p.m.

Advise the principal or supervisor of absence as soon as need arises, in advance if possible, and see that the substitute teacher has access to materials and equipment necessary for instruction. If the regular assignment is not to be used, a special lesson must be provided.

Teachers will be assigned special duties by the respective principals. Special duty assignments may be: bus duty, assembly duty, club sponsor, grounds, gymnasium, etc.

Recognizing the fact that, at times, conditions necessitate teachers leaving the campus at various times during the school day, we wish to state the following policy: In order to maintain a controlled and balanced program it is necessary that all students must be supervised at all times while at school. It is with this thought in mind that teachers are not to leave the campus during the school day without authorization from the administrative unit concerned. Teachers are required to log in and out in their campus office when leaving and returning to their school campus.

General Practices, Procedures, and Policies

Leaving Classroom Unattended: WHEN A TEACHER LEAVES A CLASSROOM UNATTENDED, HE IMMEDIATELY SUBJECTS HIMSELF TO A CHARGE OF NEGLIGENCE IN THE EVENT A CHILD IS INJURED. Too often when a teacher leaves the room, children (at times) will be prone to sword fight with rulers or poke at one another with pencils, scissors or engage in some other enjoyable activity only to injure someone. Should a suit arise over the injury of the child under this set of circumstances the teacher simply has no defensible grounds. If a teacher must leave the room for any reason, then, the teacher should somehow contact the school principal and either get their expressed permission to leave the room, or have them provide a substitute in the room for those minutes the teacher is gone.

Playground Supervision: It is estimated that some 95% of all injuries to school children occurs on the school playground. Furthermore, there is reason to believe that if the parents

wanted to pursue the matter in court, a good number of suits would be won. Playground supervision means just what it says. A teacher is to be on the school ground, watching children play, being ever on guard for any kind of situation that may arise wherein a child could possibly be injured.

A teacher who is late to duty, spends time talking to others on the playground or spends time playing games with children is not supervising their assigned area and therefore, is open to a charge of negligence in the event of an accident. Often times that occasion arises when a teacher is not feeling well or for some reason or another is unable to be on the school ground play area for supervision. In this instance, it is the responsibility of that teacher to inform the principal that he or she will be unable to be on the assigned duty so that another teacher may be assigned to cover the assigned area. Here again, if any accident occurs when no teacher is at an assigned area this leaves that teacher, principal, and school district wide open for any court suit that may follow. Accurate, written records of playground and lunchroom rosters are strongly favored here, rather than scheduling or changing daily work schedules by "word of mouth".

Standing Children in the Hallway as Punishment: In view of what has been said in the preceding paragraphs, it would seem that the reader has now drawn a conclusion that placing a child in the hallway makes it extremely difficult for the teacher to supervise that child. If a child must be removed from a classroom he should be removed to the Principal's office for proper supervision.

It is the attitude of the district that the teacher is most important to the successful classroom function. Any time a teacher is away from the classroom is detrimental to the educational opportunity of their students. There is no equivalent substitute for a good teacher in the classroom.

Conference Periods

With few exceptions, every teacher has a scheduled conference or preparation period. This time is to be used for conferences, paper grading and preparation. This is not intended to prohibit a teacher from taking a reasonable "coffee break" during this time.

Suggested Conference Techniques

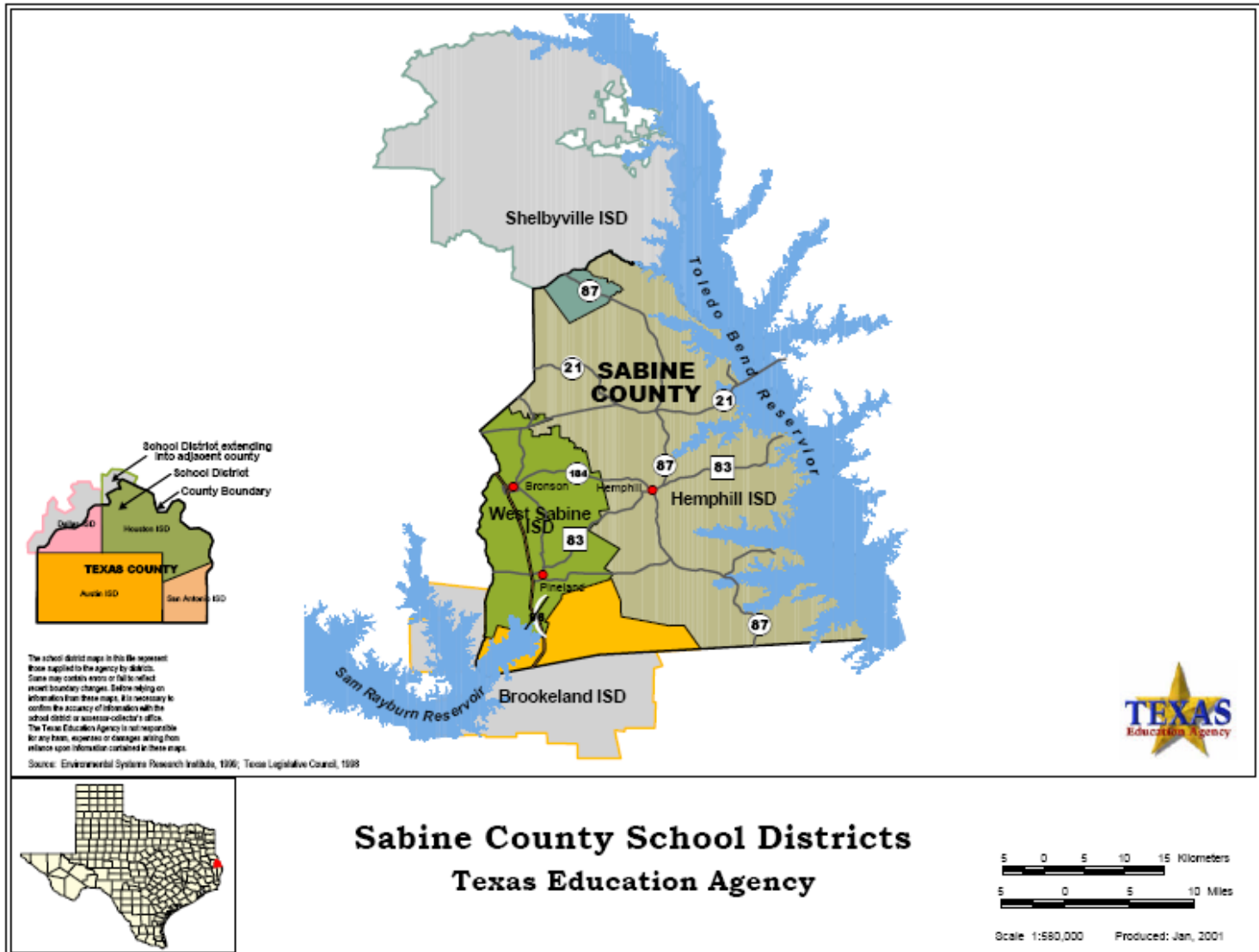
Planning, arranging and timing have very definite effects on the CONFERENCE. The interaction between teacher and parent, which takes place in the conference, may be stimulated constructively by certain techniques. Some that have been effective are:

1. The opening statement should be pleasant and positive.
2. An easy, friendly, sincere attitude on the part of the teacher will help establish and maintain a good working relationship.
3. The expressed need on the part of the teacher to know and understand the child will do much to put the parent at ease. The resulting rapport will make the sharing of experiences constructive for the child.
4. The parent should be assured of the confidential nature of the conference. This is important if rapport is to be sustained.

5. The teacher should be businesslike but should not allow the parent to feel that he is hurried.
6. The parent should be allowed to do his own thinking.
7. The teacher should trust the parent and should assume that the parent trusts him.
8. Each parent is superior to the teacher in some areas of experience, and the wise teacher will use those areas of experience in developing and maintaining a relationship that will benefit the child.
9. In closing the conference, the teacher should review the plans that have been set up, checking separate areas of responsibility for the home and for the school. In some areas the work will be cooperative.
10. The summarizing of the plan should point out the need for a continuing program of conferences.

District Information

District map



Employment

Equal Employment Opportunity

Policies DAA, DIA

In its efforts to promote nondiscrimination and as required by law, HEMPHILL ISD does not discriminate against any employee or applicant for employment because of race, color, religion, sex (including pregnancy), sexual orientation, or gender identity national origin, age, disability, military status, genetic information, or on any other basis prohibited by law. Additionally, the district does not discriminate against an employee or applicant who acts to oppose such discrimination or participates in the investigation of a complaint related to a discriminatory employment practice. Employment decisions will be made on the basis of each applicant's job qualifications, experience, and abilities.

In accordance with Title IX, the district does not discriminate on the basis of sex and is prohibited from discriminating on the basis of sex in its educational programs or activities. The prohibition against discrimination extends to employment. Inquiries about the application of Title IX may be referred to the district's Title IX coordinator, to the Assistant Secretary for Civil Rights of the Department of Education, or both.

The district designates and authorizes the following employee as the Title IX coordinator for employees to address concerns or inquiries regarding discrimination based on sex, including sexual harassment: Stephen English, Superintendent, 1000 Milam Street, Hemphill, Texas 75948, stephen.english@hemphillisd.net, 409-787-3371. Reports can be made at any time and by any person, including during non-business hours, by mail, email, or phone. During district business hours, reports may also be made in person.

The district designates and authorizes the following employee as the ADA/Section 504 coordinator for employees for concerns regarding discrimination on the basis of a disability: Stephen English, Superintendent, 1000 Milam Street, Hemphill, Texas 75948, stephen.english@hemphillisd.net, 409-787-3371.

Employees with questions or concerns relating to discrimination for any of the reasons listed above should contact the Superintendent.

Job Vacancy Announcements

Policy DC

Announcements of job vacancies by position and location are posted on a regular basis to the district's Web site.

Employment after Retirement

Policy DC

Individuals receiving retirement benefits from the Teacher Retirement System (TRS) may be employed under certain circumstances on a full or part-time basis without affecting their benefits, according to TRS rules and state law. Detailed information about employment after retirement is available in the TRS publication Employment After Retirement. Employees can contact TRS for additional information by calling 800-223-8778 or 512-542-6400. Information is also available on the TRS Web Site (www.trs.texas.gov).

Contract and Noncontract Employment

Policy DC series

State law requires the district to employ all full-time professional employees in positions requiring a certificate from the State Board for Educator Certification (SBEC) and nurses under probationary, or term contracts. Employees in all other positions are employed at-will that is not subject to the procedures for nonrenewal or termination under Chapter 21 of the Texas Education Code. The paragraphs that follow provide a general description of the employment arrangements used by the district.

Probationary Contracts. Nurses and full-time professional employees new to the district and employed in positions requiring SBEC certification must receive a probationary contract during their first year of employment. Former employees who are hired after a two-year lapse in district employment or employees who move to a position requiring a new class of certification may also be employed by probationary contract. Probationary contracts are one-year contracts. The probationary period for those who have been employed as a teacher in public education for at least five of the eight years preceding employment with the district may not exceed one school year. For those with less experience, the probationary period will be three school years (i.e., three one-year contracts) with an optional fourth school year if the Board determines it is doubtful whether a term contract should be given.

Term Contracts. Full-time professionals employed in positions requiring certification and nurses will be employed by term contracts after they have successfully completed the probationary period. Campus principals and all administrators are employed under two-year term contracts. The terms and conditions of employment are detailed in the contract and employment policies. All employees will receive a copy of their contract. Employment policies can be accessed online or copies will be provided upon request.

Noncertified Professional and Administrative Employees. Employees in professional and administrative positions that do not require SBEC certification (such as noninstructional administrators) are employed by a one-year contract that is not subject to the provisions for nonrenewal or termination under the Texas Education Code.

Paraprofessional and Auxiliary Employees. All paraprofessional and auxiliary employees, regardless of certification, are employed at will and not by contract. Employment is not for any specified term and may be terminated at any time by either the employee or the district.

Certification and Licenses

Policies DBA, DF

Professional employees whose positions require SBEC certification or professional license are responsible for taking actions to ensure their credentials do not lapse. Employees must submit documentation that they have passed the required certification exam and/or obtained or renewed their credentials to the Central Administration Office in a timely manner. Employees licensed by the Texas Department of Licensing and Regulations (TDLR) must notify the superintendent when there is action against, or revocation of, their license.

A certified employee's contract may be voided without Chapter 21 due process and employment terminated if the individual does not hold a valid certificate or fails to fulfill the requirements necessary to renew or extend a temporary certificate, emergency certificate, probationary certificate, or permit. A contract may also be voided if SBEC suspends or

revokes certification because of an individual's failure to comply with criminal history background checks. Contact your campus principal if you have any questions regarding certification or licensure requirements.

Recertification of Employment Authorization

Policy DC

At the time of hire, all employees must complete the Employment Eligibility Verification Form (Form I-9) and present documents to verify identity and employment authorization.

Employees whose immigration status, employment authorization, or employment authorization documents have expired must present new documents that show current employment authorization. Employees should file the necessary application or petition sufficiently in advance to ensure that they maintain continuous employment authorization or valid employment authorization documents. Contact the Superintendent if you have questions regarding reverification of employment authorization. Failure to verify employment authorization may result in termination.

Searches and Alcohol and Drug Testing

Policies CQ, DHE

Non-investigatory searches in the workplace, including accessing an employee's desk, file cabinets, or work area to obtain information needed for usual business purposes may occur when an employee is unavailable. Therefore, employees are hereby notified that they have no legitimate expectation of privacy in those places. In addition, the district reserves the right to conduct searches when there is reasonable cause to believe a search will uncover evidence of work-related misconduct. Such an investigatory search may include drug and alcohol testing if the suspected violation relates to drug or alcohol use. The district may search the employee, the employee's personal items, and work areas including district-owned technology resources, lockers, and private vehicles parked on district premises or work sites or used in district business. Disciplinary action, up to and including termination, may result if an employee refuses to submit to testing or is found to violate district policy.

Employees Required to Have a Commercial Driver's License. Any employee whose duties require a commercial driver's license (CDL) is subject to alcohol and drug testing. This includes all drivers who operate a motor vehicle designed to transport 16 or more people, counting the driver; drivers of large vehicles; or drivers of vehicles used in the transportation of hazardous materials. Teachers, coaches, or other employees who primarily perform duties other than driving are subject to testing requirements if their duties include driving a commercial motor vehicle.

Drug testing will be conducted before an individual assumes driving responsibilities. Alcohol and drug tests will be conducted when reasonable suspicion exists, at random, when an employee returns to duty after engaging in prohibited conduct, and as a follow-up measure. Testing may be conducted following accidents. Return-to-duty and follow-up testing will be conducted if an employee who has violated the prohibited alcohol conduct standards or tested positive for alcohol or drugs is allowed to return to duty.

All employees required to have a CDL or who otherwise are subject to alcohol and drug testing will receive a copy of the district's policy, the testing requirements, and detailed information on alcohol and drug abuse and the availability of assistance programs. Employees with

questions or concerns relating to alcohol and drug policies and related educational material should contact the Central Administration Office.

Health Safety Training

Policies DBA, DMA

Certain employees who are involved in physical activities for students must maintain and submit to the district proof of current certification or training in first aid, cardiopulmonary resuscitation (CPR), and the use of an automated external defibrillator (AED), concussion, and extracurricular athletic activity safety. Certification or documentation of training must be issued by the American Red Cross, the American Heart Association, or another organization that provides equivalent training and certification. Employees subject to this requirement must submit their certification or documentation to the Central Administration Office by August 26, 2023.

School nurses and employees with regular contact with students must complete a Texas Education Agency approved, online training regarding seizure disorder awareness, recognition, and related first aid.

Reassignments and Transfers

Policy DK

All personnel are subject to assignment and reassignment by the Superintendent or designee when the Superintendent or designee determines that the assignment or reassignment is in the best interest of the district. Reassignment is a transfer to another position, department, or facility that does not necessitate a change in the employment contract. Campus reassignments must be approved by the principal at the receiving campus except when reassignments are due to enrollment shifts or program changes. Extracurricular or supplemental duty assignments may be reassigned at any time unless an extracurricular or supplemental duty assignment is part of a dual-assignment contract. Employees who object to a reassignment may follow the district process for employee complaints as outlined in this handbook and district policy DGBA (Local).

An employee with the required qualifications for a position may request a transfer to another campus or department. A written request for transfer must be completed and signed by the employee and the employee's supervisor. A teacher requesting a transfer to another campus before the school year begins must submit their request by May 31. Requests for transfer during the school year will be considered only when the change will not adversely affect students and after a replacement has been found. All transfer requests will be coordinated by the campus Principal's office and must be approved by the receiving supervisor.

Workload and Work Schedules

Policies DEAB, DK, DL

Professional Employees. Professional employees and academic administrators are exempt from overtime pay and are employed on a 10, 11, or 12 month basis, according to the work schedules set by the district. A school calendar is adopted each year designating the work schedule for teachers and all school holidays. Notice of work schedules including start and end dates and scheduled holidays will be distributed each school year.

Classroom teachers will have planning periods for instructional preparation, including conferences. The schedule of planning periods is set at the campus level but must provide at least 450 minutes within each two-week period in blocks not less than 45 minutes within the instructional day. Teachers and librarians are entitled to a duty-free lunch period of at least 30 minutes. The district may require teachers to supervise students during lunch one day a week when no other personnel are available.

Paraprofessional and Auxiliary Employees. Support employees are employed at will and will receive notification of the required duty days, holidays, and hours of work for their position on an annual basis. Paraprofessional and auxiliary employees must be compensated for overtime and are not authorized to work in excess of their assigned schedule without prior approval from their supervisor. See Overtime Compensation on page 31 for additional information.

Breaks for Expression of Breast Milk

Policies DEAB, DG

The district supports the practice of expressing breast milk and makes reasonable accommodations for the needs of employees who express breast milk. A place, other than a multiple user bathroom, that is shielded from view and free from intrusion from other employees and the public where the employee can express breast milk will be provided.

A reasonable amount of break time will be provided when the employee has a need to express milk. For nonexempt employees, these breaks are unpaid and are not counted as hours worked. Employees should meet with their supervisor to discuss their needs and arrange break times.

The Providing Urgent Maternal Protections of Nursing Mothers Act (PUMP Act) requires an employee to notify the district if they believe the district is out of compliance in providing breaks for a nursing mother. The employee must give the district 10 days to come into compliance before making any claim of liability against the district. An employee with concerns should contact Stephen English, Superintendent, 409-787-3371.

Pregnant Workers Fairness Act

The Pregnant Workers Fairness Act (PWFA) provides consideration of accommodations to employees who have known limitations related to pregnancy, childbirth, or related medical conditions. An employee seeking a PWFA accommodation should contact Stephen English, Superintendent, 409-787-3371 to begin the interactive process.

Notification to Parents Regarding Qualifications

Policies DK, DBA

In schools receiving Title I funds, the district is required by the Every Student Succeeds Act (ESSA) to notify parents at the beginning of each school year that they may request information regarding the professional qualifications of their child's teacher. ESSA also requires that parents be notified if their child has been assigned or taught for four or more consecutive weeks by a teacher does not meet applicable state certification or licensure requirements.

Texas law requires that parents be notified if their child is assigned for more than 30 consecutive instructional days to a teacher who does not hold an appropriate teaching certificate. This notice is not required if parental notice under ESSA is sent. Inappropriately certified or uncertified teachers include individuals on an emergency permit (including individuals waiting to take a certification exam) and individuals who do not hold any certificate or permit. Information relating to teacher certification will be made available to the public upon request. Employees who have questions about their certification status can call the Central Administration Office.

Outside Employment and Tutoring

Policy DBD

Employees are required to disclose in writing to their immediate supervisor any outside employment that may create a potential conflict of interest with their assigned duties and responsibilities or the best interest of the district. Supervisors will consider outside employment on a case by case basis and determine whether it should be prohibited because of a conflict of interest.

Performance Evaluation

Policy DN series

Evaluation of an employee's job performance is a continuous process that focuses on improvement. Performance evaluation is based on an employee's assigned job duties and other job-related criteria. All employees will participate in the evaluation process with their assigned supervisor at least annually. Teachers on term contracts teaching the same subject as the previous year may be evaluated biannually per campus principal assignment. Written evaluations will be completed on forms approved by the district. Reports, correspondence, and memoranda also can be used to document performance information. All employees will receive a copy of their written evaluation, participate in a performance conference with their supervisor, and have the opportunity to respond to the evaluation.

Upon receiving a report, a nursing review committee may review a nurse's nursing services, qualifications, and quality of patient care, as well as the merits of a complaint concerning a nurse, and a determination or recommendation regarding a complaint. A nurse may request, orally or in writing, a determination by the committee regarding conduct requested of the nurse believed to violate the nurse's duty to a patient.

Employee Involvement

Policies BQA, BQB

At both the campus and district levels, Hemphill ISD offers opportunities for input in matters that affect employees and influence the instructional effectiveness of the district. As part of the district's planning and decision-making process, employees are elected to serve on district or campus level advisory committees. Plans and detailed information about the shared decision-making process are available in each campus office or from the District Policy Manual.

Staff Development

Policy DMA

Staff development activities are organized to meet the needs of employees and the district. Staff development for instructional personnel is predominantly campus-based, related to achieving campus performance objectives, addressed in the Campus Improvement Plan, and approved by a campus-level advisory committee. Staff development for noninstructional personnel is designed to meet specific licensing requirements (e.g., bus drivers) and continued employee skill development.

Individuals holding renewable SBEC certificates are responsible for obtaining the required training hours and maintaining appropriate documentation.

Compensation and Benefits

Salaries, Wages, and Stipends

Policies DEA, DEAA, DEAB

Employees are paid in accordance with administrative guidelines and an established pay structure. The district's pay plans are reviewed by the administration each year and adjusted as needed. All district positions are classified as exempt or nonexempt according to federal law. Professional employees and academic administrators are generally classified as exempt and are paid monthly salaries. They are not entitled to overtime compensation. Other employees are generally classified as nonexempt and are paid an hourly wage or salary and receive compensatory time or overtime pay for each hour worked beyond 40 in a workweek. (See *Overtime Compensation*, page 31).

All employees will receive written notice of their pay and work schedules before the start of each school year. Classroom teachers, full-time librarians, full-time nurses, and full-time counselors will be paid no less than the minimum state salary schedule. Contract employees who perform extracurricular or supplemental duties may be paid a stipend in addition to their salary according to the district's extra-duty pay schedule.

Employees should contact Amanda McClelland for more information about the district's pay schedules or their own pay.

Paychecks

All professional, salaried, and hourly employees are paid monthly over a 12 month pay period.

12 month employees – July 1 – June 30

11 month employees – August 1 – July 31

10 month employees – September 1 – August 31

Paychecks will not be released to any person other than the district employee named on the check without the employee's written authorization.

Automatic Payroll Deposit

All employees' payroll checks will be direct deposited into a designated account. Contact Sally Butler for more information about the direct deposit service.

EMPLOYEE PAYDAYS

August 24	Nov. 17	Feb. 16	May 24
Sept. 22	Dec. 15	Mar. 23	June 22
Oct. 24	Jan. 24	April 24	July 24

Payroll Deductions

Policy CFEA

Automatic payroll deductions for the Teacher Retirement System of Texas (TRS) or Social Security employee contributions and federal income tax required for all full-time employees. Medicare tax deductions (applicable only to employees hired in this district after March 31, 1986). Child support and spousal maintenance, if applicable. Delinquent federal education loan payments, if applicable.

Other payroll deductions employees may elect include deductions for the employee's share of premiums for health, dental, life, vision insurance; annuities; higher education savings plans or prepaid tuition programs and HISD Foundation Association. Employees also may request payroll deduction for payment of membership dues to professional organizations. Salary deductions are automatically made for unauthorized or unpaid leave.

Overpayments. Employees are not entitled to any funds the district overpays. An agreement between an employee and the district must be in place in order to deduct any overpayment from one or more paychecks if an overpayment occurs.

Overtime Compensation

Policies DEAB, DEC

The district compensates overtime for nonexempt employees in accordance with federal wage and hour laws. Only nonexempt employees (hourly employees and paraprofessional employees) are entitled to overtime compensation. Nonexempt employees are not authorized to work beyond their normal work schedule without advance approval from their supervisor. A nonexempt employee who works overtime without prior approval will be subject to disciplinary action up to and including termination.

Overtime is legally defined as all hours worked in excess of 40 hours in a workweek and is not measured by the day or by the employee's regular work schedule. Nonexempt employees that are paid on a salary basis are paid for a 40 hour workweek and do not earn additional pay unless they work more than 40 hours. For the purpose of calculating overtime, a workweek begins at 12:01 a.m. Sunday and ends at midnight Saturday.

Employees may be compensated for overtime at time-and-a-half rate with compensatory time off (comp time) or direct pay. The following applies to all nonexempt employees:

- Employees can accumulate up to 60 hours of comp time.
- Use of comp time may be at the employee's request with supervisor approval, as workload permits, or at the supervisor's direction.
- An employee is required to use comp time before using available paid leave (e.g., sick, personal, vacation).
- Weekly time records will be maintained on all nonexempt employees for the purpose of wage and salary administration.

Hemphill ISD Employee Bonus Program

Purpose

To increase the compensation package for all employees and reward for service to Hemphill ISD.

Plan Design

Hemphill ISD employees subject to eligibility requirements, will receive a specified amount based on their continuous service to Hemphill ISD in three separate lump sum payments.

Payment and amount of these bonuses is contingent on the receipt of Federal Forest Funding and the financial stability of the district.

Effective Date

This plan is effective with the 2023 - 2024 school year.

Payment of Employee Bonuses

Payment will be made in three separate lump sum payments in August, December, and May.

Eligibility

Eligibility to participate in the Hemphill ISD Employee Bonus Program is determined as follows:

Full-time Hemphill ISD employees eligible for employee benefits, meaning those who work greater than or equal to 20 hours per week, are eligible to participate in this program.

Employee Bonus Program Amounts

Employee Bonus Program Payments

August
December
May

Retention Bonus

up to \$ 1,000
up to \$ 212
up to \$ 213

Additional Information regarding Employee Bonus:

1. Eligibility will be based on the same guidelines utilized by TRS for a creditable year of service.
2. TRS service credit is earned in one-year increments based on 90 days of eligible service. Days of absence which your pay is docked do not count as an eligible day of service.
3. To be eligible for payment in December you must have completed 45 days of service with HISD in the current semester by November 30th.
4. To be eligible for payment in May you must have completed 45 days of service with HISD in the current semester by April 30th.
5. To be eligible for payment in August you must have completed 90 days of service in the prior school year and return to employment for the current year starting that August.

Sabine County Shared Services Arrangement

Hemphill ISD is the fiscal agent for the SCSSA (hereafter referred to as the Coop). Coop employees are eligible to participate in the retention bonus program subject to the same eligibility requirements as all other eligible Hemphill ISD employees.

Travel Expense Reimbursement

Policy DEE

Before any travel expenses are incurred by an employee, the employee's supervisor must give approval. For approved travel, employees will be reimbursed for mileage, provided school transportation is not available, and other travel expenditures according to the current rate schedule established by the district. Employees must submit receipts, to the extent possible, to be reimbursed for allowable expenses other than mileage. Itemization of expenses shall be turned in on the district's travel form immediately upon returning from a school trip. Meals will only be reimbursed for overnight trips.

Texting while driving a school vehicle will be considered a violation of school policy.

Health, Dental, and Life Insurance

Policy CRD

Group health insurance coverage is provided through TRS-ActiveCare, the statewide public school employee health insurance program. The district's contribution to employee insurance premiums is determined annually by the Board of Trustees. The District is currently paying a single premium for Active Care I. Employees eligible for health insurance coverage include the following:

- Employees who are active, contributing TRS members
- Employees who are not contributing TRS members and who are employed for 10 or more regularly scheduled hours per week

The insurance plan year is from September 1 through August 31. Current employees can make changes in their insurance coverage during open enrollment each year or when they experience a qualifying event (e.g., marriage, divorce, birth). Detailed descriptions of insurance coverage, employee cost, and eligibility requirements are provided to all employees in a separate booklet. Employees should contact the Payroll Department for more information.

Supplemental Insurance Benefits

Policy CRD

At their own expense, employees may enroll in supplemental insurance programs such as dental, supplemental life, disability, cancer, annuities, etc. Premiums for these programs can be paid by payroll deduction. Employees should contact the Payroll Department for more information.

Cafeteria Plan Benefits (Section 125)

Employees may be eligible to participate in the Cafeteria Plan (Section 125) and, under IRS regulations, must either accept or reject this benefit. This plan enables eligible employees to pay certain insurance premiums on a pretax basis (i.e., disability, accidental death and dismemberment, cancer and dread disease, dental, and additional term life insurance). A third-party administrator handles employee claims made on these accounts.

New employees must accept or reject this benefit during their first month of employment. All employees must accept or reject this benefit on an annual basis and during the specified time period.

Workers' Compensation Insurance

Policy CRE

The district, in accordance with state law, provides workers' compensation benefits to employees who suffer a work-related illness or are injured on the job. The district has workers' compensation coverage from TASB, effective September 1. Benefits help pay for medical treatment and make up for part of the income lost while recovering. Specific benefits are prescribed by law depending on the circumstances of each case.

All work-related accidents or injuries should be reported IMMEDIATELY to Central Administration Office or claims may not be possible. Employees who are unable to work because of a work-related injury will be notified of their rights and responsibilities under the Texas Labor Code. See section on *Workers' Compensation Benefits* for information on use of paid leave for such absences.

Unemployment Compensation Insurance

Policy CRF

Employees who have been laid off or terminated through no fault of their own may be eligible for unemployment compensation benefits. Employees are not eligible to collect unemployment benefits during regularly scheduled breaks in the school year or the summer months if they have employment contracts or reasonable assurance of returning to service. Employees with questions about unemployment benefits should contact the Central Administration Office.

Teacher Retirement

All personnel employed on a regular basis for at least four and one-half months are members of the Teacher Retirement System of Texas (TRS). Substitutes not receiving TRS service retirement benefits who work at least 90 days a year are eligible to purchase a year of creditable service in TRS. TRS provides members with an annual statement of their account showing all deposits and the total account balance for the year ending August 31, as well as an estimate of their retirement benefits.

Employees who plan to retire under TRS should notify Sally Butler as soon as possible. Information on the application procedures for TRS benefits is available from TRS at Teacher Retirement System of Texas, 1000 Red River Street, Austin, Texas 78701-2698, or call 800-223-8778 or 512-542-6400. TRS information is also available on the Web (www.trs.texas.gov). See page 25 for information on restrictions of employment of retirees in Texas public schools.

Other Benefit Programs

Leaves and Absences

Policy DEC, DECA, DECB

The district offers employees paid and unpaid leaves of absence in times of personal need. This handbook describes the basic types of leave available and restrictions on leaves of absence. Employees who have personal needs that will require long leaves of absence should

call their principal or supervisor for counseling about leave options, continuation of benefits, and communicating with the district.

Paid leave must be used in half day increments. Earned comp time must be used before any available paid state and local leave. Unless an employee requests a different order, available paid state and local leave will be used in the following order:

Paid State Leave

Local Leave

Employees must follow district and department or campus procedures to report or request any leave of absence and complete the appropriate form or certification. Any unapproved absences or absences beyond accumulated or available paid leave shall result in deduction from the employee's pay. Any employee who is absent more than three (3) days because of a personal or family illness must submit a medical certification from a qualified health care provider confirming the specific dates of the illness, the reason for the illness, and—in the case of personal illness—the employee's fitness to return to work.

If an hourly employee does not report or request leave of absence(s) according to district procedures, the incident is considered a "no call/no show". An employee who is absent for 3 consecutive days without notice is considered to have abandoned their job and may face disciplinary consequences up to and including termination.

Immediate Family. For purposes of leave other than family and medical leave, immediate family is defined as the following:

Spouse

Son or daughter, including a biological, adopted, or foster child, a son or daughter-in-law, a stepchild, a legal ward, or a child for whom the employee stands in loco parentis.

Parent, stepparent, parent-in-law, or other individual who stands in loco parentis to the employee.

Sibling, stepsibling, and sibling-in-law

Grandparent and grandchild

Any person residing in the employee's household at the time of illness or death

For purposes of family and medical leave, the definition of family is limited to spouse, parent, son or daughter, and next of kin. The definition of these are found in Policy DECA (LEGAL).

Medical Certification. Any employee who is absent more than 3 days because of a personal or family illness must submit a medical certification from a qualified health care provider confirming the specific dates of the illness, the reason for the illness, and in the case of personal illness, the employee's fitness to return to work. Personal and local sick leave is earned on an annual basis. If an employee leaves the district before the end of the work year, the cost of any unearned leave days taken shall be deducted from the employee's final paycheck.

The district may require medical certification due to an employee's questionable pattern of absences or when deemed necessary by the supervisor or superintendent. The district may also request medical certification when an employee requests leave under the Family and Medical Leave Act (FMLA) for the employee's serious health condition, a serious health condition of the employee's spouse, parent, or child, or for military caregiver leave.

The Genetic Information Nondiscrimination Act of 2008 (GINA) prohibits covered employers from requesting or requiring genetic information of an individual or family member of the individual, except as specifically allowed by this law. To comply with this law, we ask that employees and health care providers do not provide any genetic information in any medical certification. "Genetic information", as defined by GINA, includes an individual's family medical history, the results of an individual's or family member's genetic tests, the fact that an individual or an individual's family member sought or received genetic services, and genetic information of a fetus carried by an individual or an individual's family member or an embryo lawfully held by an individual or family member receiving assistive reproductive services.

Continuation of Health Insurance. Employees on an approved leave of absence other than family and medical leave may continue their insurance benefits at their own expense. Health insurance benefits for employees on paid leave and leave designated under the FMLA will be paid by the district as they were prior to the leave. Otherwise, the district does not pay any portion of insurance premiums for employees who are on unpaid leave.

Under TRS-Active Care rules, an employee is no longer eligible for insurance through the district after six months of unpaid leave other than FML. If an employee's unpaid leave extends for more than six months, the district will provide the employee with notice of COBRA rights.

Personal Leave

State law entitles all employees to five days of paid personal leave per year. Personal leave is available for use at the beginning of the year. A day of personal leave is equivalent to the number of hours per day in an employee's usual assignment, whether full-time or part time. State personal leave accumulates without limit, is transferable to other Texas school districts and generally transfers to education service centers. Personal leave may be used for two general purposes: nondiscretionary and discretionary.

Nondiscretionary. Leave taken for personal or family illness, family emergency, a death in the family, or active military service is considered nondiscretionary leave. Reasons for this type of leave allows very little, if any, advance planning. Nondiscretionary leave may be used in the same manner as state sick leave.

Discretionary. Leave taken at an employee's discretion that can be scheduled in advance is considered discretionary leave. An employee wishing to take discretionary personal leave must submit a request three (3) days in advance of the anticipated absence to his or her principal or supervisor. Discretionary personal leave will be granted on a first-come, first-served basis. The effect of the employee's absence on the educational program or department operations, as well as the availability of substitutes, will be considered by the principal or supervisor. No more than 3 concurrent days may be approved for local and/or state discretionary personal leave.

Leave Proration If an employee separates from employment with the district before his or her last duty day of the year, or begins employment after the first duty day, state personal leave will be prorated based on the actual time employed. When an employee separates from employment before the last duty day of the school year, the employee's final paycheck will be reduced by the amount of state personal leave the employee used beyond his or her pro rata entitlement for the school year.

State Sick Leave

State sick leave accumulated before 1995 is available for use and may be transferred to other school districts in Texas.

If an employee uses more state sick leave than he or she has earned, the cost of unearned sick leave will be deducted from the employee's next paycheck.

State sick leave may be used for the following reasons only:

- Employee illness
- Illness in the employee's immediate family
- Family emergency (i.e., natural disasters or life-threatening situations)
- Death in the immediate family
- Active military service

Local Leave

Policy DEC

All employees shall earn three paid local leave days per school year in accordance with administrative regulations.

Local leave shall be noncumulative.

Local leave shall be used according to the terms and conditions of state personal leave (see State Personal Leave, above); however, the average daily rate of pay of a substitute for the employee's position shall be deducted for each day of local leave taken, whether or not a substitute is employed.

Extended Sick Leave

Policy DEC

After all available state and local leave days have been exhausted, an employee shall be granted in a school year a maximum of 25 leave days of extended sick leave to be used for the employee's catastrophic illness or injury, including pregnancy-related illness or injury, or for absences related to the catastrophic illness or injury of a member of the employee's immediate family.

A written request for extended sick leave must be accompanied by medical certification of the illness or injury.

The average daily rate of pay of a substitute (or a proportionate amount established by the Board by personnel classification) shall be deducted for each day of extended sick leave taken, whether or not a substitute is employed.

Sick Leave Pool

An employee who has exhausted all paid leave and who suffers from a catastrophic illness or injury or is absent due to the catastrophic illness or injury of a member of the employee's immediate family may request the establishment of a sick leave pool, to which District employees may donate state personal leave for use by the eligible employee.

If the employee is unable to submit the request, a member of the employee's family or the employee's supervisor may submit the request to establish a sick leave pool.

The pool shall cease to exist when the employee no longer needs leave for the purpose requested, uses the maximum number of days allowed under a pool, or exhausts all leave days donated to the sick leave pool.

The Superintendent or designee shall develop regulations for the implementation of the sick leave pool that address the following:

1. Procedures to request the establishment of a sick leave pool;
2. The maximum number of days an employee may donate to a sick leave pool;
3. The maximum number of days per school year an eligible employee may receive from a sick leave pool; and
4. The return of unused days to donors.

Appeal

All decisions regarding the establishment or implementation of the District's sick leave pool may be appealed in accordance with DGBA (Local), beginning with the Superintendent or designee.

Family and Medical Leave (FML) – General Provisions

The following text is from the federal notice, Your Employee Rights Under the Family and Medical Leave Act. Specific information that the district has adopted to implement the FMLA follows this general notice.

What is FMLA leave?

The Family and Medical Leave Act (FMLA) is a federal law that provides eligible employees with job protected leave for qualifying family and medical reasons.

The U.S. Department of Labor's Wage and Hour Division (WHD) enforces the FMLA for most employees. Eligible employees can take up to 12 workweeks of FMLA leave in a 12 month period for:

The birth, adoption or foster placement of a child with you

Your serious mental or physical health condition that makes you unable to work

To care for your spouse, child or parent with a serious mental or physical health condition, and

Certain qualifying reasons related to the foreign deployment of your spouse, child or parent who is a military service member

An eligible employee who is the spouse, child, parent or next of kin of a covered service member with a serious injury or illness may take up to 26 work weeks of FMLA leave in a single 12 month period to care for the service member.

You have the right to use FMLA leave in one block of time. When it is medically necessary or otherwise permitted, you may take FMLA leave intermittently in separate blocks of time, or on a reduced schedule by working less hours each day or week. Read Fact Sheet # 28M(c) for more information.

FMLA leave is not paid leave, but you may choose, or be required by your employer, to use any employer provided paid leave if your employer's paid leave policy covers the reason for which you need FMLA leave.

Am I eligible to take FMLA leave?

You are an eligible employee if all of the following apply:

You work for a covered employer

You have worked for your employer at least 12 months

You have at least 1,250 hours of service for your employer during the 12 months before your leave, and

Your employer has at least 50 employees within 75 miles of your work location

You work for a covered employer if one of the following applies:

You work for a private employer that had at least 50 employees during at least 20 workweeks in the current or previous calendar year

You work for an elementary or public or private secondary school, or

You work for a public agency, such as a local, state or federal government agency. Most federal employees are covered by Title II of the FMLA, administered by the Office of Personnel Management

How do I request FMLA leave?

Generally, to request FMLA leave you must:

Follow your employer's normal policies for requesting leave

Give notice at least 30 days before your need for FMLA leave, or

If advance notice is not possible, give notice as soon as possible

You do not have to share a medical diagnosis but must provide enough information to your employer so they can determine whether the leave qualifies for FMLA protection. You must also inform your employer if FMLA leave was previously taken or approved for the same reason when requesting additional leave.

Your employer may request certification from a health care provider to verify medical leave and may request certification of a qualifying exigency.

The FMLA does not affect any federal or state law prohibiting discrimination or supersede any state or local law or collective bargaining agreement that provides greater family or medical leave rights.

State employees may be subject to certain limitations in pursuit of direct lawsuits regarding leave for their own serious health conditions. Most federal and certain congressional employees are also covered by the law but are subject to the jurisdiction of the U.S. Office of Personnel Management or Congress

What does my employer need to do?

If you are eligible for FMLA leave, your employer must:

Allow you to take job protected time off work for a qualifying reason

Continue your group health plan coverage while you are on leave on the same basis as if you had not taken leave, and

Allow you to return to the same job, or a virtually identical job with the same pay, benefits and other working conditions, including shift and location, at the end of your leave

Your employer cannot interfere with your FMLA rights or threaten or punish you for exercising your rights under the law. For example, your employer cannot retaliate against you for requesting FMLA leave or cooperating with a WHD investigation.

After becoming aware that your need for leave is for a reason that may qualify under the FMLA, your employer must confirm whether you are eligible or not eligible for FMLA leave. If your employer determines that you are eligible, your employer must notify you in writing:
About your FMLA rights and responsibilities, and
How much of your requested leave, if any, will be FMLA protected leave

Where can I find more information?

Call 1-866-487-9243 or visit dol.gov/fmla to learn more

If you believe your rights under the FMLA have been violated, you may file a complaint with WHD or file a private lawsuit against your employer in court. Scan the QR code to learn about WHD complaint process.



Temporary Disability Leave

Certified Employees. Any full-time employee whose position requires certification from the State Board for Educator Certification (SBEC) is eligible for temporary disability leave. The purpose of temporary disability leave is to provide job protection to full-time educators who cannot work for an extended period of time because of a mental or physical disability of a temporary nature. Temporary disability leave must be taken as a continuous block of time. It may not be taken intermittently or on a reduced schedule. Pregnancy and conditions related to pregnancy are treated the same as any other temporary disability.

Employees must request approval for temporary disability leave. An employee's notification of need for extended absence due to the employee's own medical condition shall be accepted as a request for temporary disability leave. The request must be accompanied by a physician's statement confirming the employee's inability to work and estimating a probable date of return. If disability leave is approved, the length of leave is no longer than one hundred eighty (180) calendar days.

If an employee is placed on temporary disability leave involuntarily, he or she has the right to request a hearing before the Board of Trustees. The employee may protest the action and present additional evidence of fitness to work.

When an employee is ready to return to work, the employee's supervisor should be notified at least 30 days in advance. The return-to-work notice must be accompanied by a physician's statement confirming that the employee is able to resume regular duties. Certified employees returning from leave will be reinstated to the school to which they were previously assigned if an appropriate position is available. If an appropriate position is not available, the employee may be assigned to another campus, subject to the approval of the campus principal. If a position is not available before the end of the school year, the employee will be reinstated to a position at the original campus at the beginning of the following school year.

Local Procedures for Implementing Family and Medical Leave Provisions

Eligible employees can take up to 12 weeks of unpaid leave in the 12 month period from January 1 through December 31.

Use of Paid Leave. FML runs concurrently with accrued sick and personal leave, temporary disability leave, compensatory time, assault leave, and absences due to a work-related illness or injury. The district will designate the leave as FML, if applicable, and notify the employee that accumulated leave will run concurrently.

Combined Leave for Spouses. Spouses who are employed by the district are limited to a combined total of 12 weeks of FML to care for a parent with a serious health condition; or for the birth, adoption, or foster placement of a child. Military caregiver leave for spouses is limited to a combined total of 26 weeks.

Intermittent Leave. The District shall permit use of intermittent or reduced schedule FMLA leave for the care of a newborn child or for the adoption or placement of a child with the employee (See DECA (LEGAL) for use of intermittent or reduced schedule leave due to a medical necessity).

Fitness for Duty

An employee that takes FML due to the employee's own serious health condition shall provide, before resuming work, a fitness-for-duty certification from the health care provider. When leave is taken for the employee's own serious health condition, the certification must address the employee's ability to perform essential job functions. The district shall provide a list of essential job functions (e.g., job description) to the employee with the FML designation notice to share with the health care provider. Fitness for duty is not required when an employee returns to work following leave to care for a family member with a serious health condition; to care for a child following birth, adoption, or foster care placement; or for qualifying exigency leave.

Reinstatement. An employee returning to work at the end of FML will be returned to the same position held when the leave began or to an equivalent position with equivalent employment benefits, pay, and other terms and conditions of employment.

In certain cases, instructional employees desiring to return to work at or near the conclusion of a semester may be required to continue on family and medical leave until the end of the semester. The additional time off is not counted against the employee's FML entitlement, and

the district will maintain the employees group health insurance and reinstate the employee at the end of the leave according to the procedures outlined in policy (see DECA (LEGAL)).

Failure to Return. If, at the expiration of FML, the employee is able to return to work but chooses not to do so, the district may require the employee to reimburse the district's share of insurance premiums paid during any portion of FML when the employee was on paid leave. If the employee fails to return to work for a reason beyond the employee's control, such as a continuing personal or family serious health condition or a spouse being unexpectedly transferred more than 75 miles from the district, the district may not require the employee to reimburse the district's share of premiums paid.

District Contact. Employees that require FML or have questions should contact the Business Office for details on eligibility, requirement, and limitations.

Temporary Disability Leave

Certified Employees. Any full-time employee whose position requires certification from the State Board for Educator Certificate (SBEC) is eligible for temporary disability leave. The purpose of temporary disability leave is to provide job protection to full-time educators who cannot work for an extended period of time because of a mental or physical disability of a temporary nature. Temporary disability leave must be taken as a continuous block of time. It may not be taken intermittently or on a reduced schedule. Pregnancy and conditions related to pregnancy are treated the same as any other temporary disability.

Employees must request approval for temporary disability leave. An employee's notification of need for extended absence due to the employee's own medical condition shall be accepted as a request for temporary disability leave. The request must be accompanied by a physician's statement confirming the employee's inability to work and estimating a probable date of return. If disability leave is approved, the length of leave is no longer than 180 calendar days.

If an employee is placed on temporary disability leave involuntarily, he or she has the right to request a hearing before the board of trustees. The employee may protest the action and present additional evidence of fitness to work.

When an employee is ready to return to work, the Business Office should be notified at least 30 days in advance. The return-to-work notice must be accompanied by a physician's statement confirming that the employee is able to resume regular duties.

Certified employees returning from leave will be reinstated to the school to which they were previously assigned if an appropriate position is available. If an appropriate position is not available, the employee may be assigned to another campus, subject to the approval of the campus principal. If a position is not available before the end of the school year, the employee will be reinstated to a position at the original campus at the beginning of the following school year.

Workers' Compensation Benefits

An employee absent from duty because of a job-related illness or injury may be eligible for workers' compensation weekly income benefits if the absence exceeds seven calendar days.

An employee receiving workers' compensation wage benefits for a job-related illness or injury may choose to use accumulated sick leave or any other paid leave benefits. An employee choosing to use paid leave will not receive workers' compensation weekly income benefits until all paid leave is exhausted or to the extent that paid leave does not equal the pre-illness or injury wage. If the use of paid leave is not elected, then the employee will only receive workers' compensation wage benefits for any absence resulting from a work-related illness or injury, which may not equal his or her pre-illness or injury wage. All work related accidents or injuries should be reported immediately to Central Administration Office.

Assault Leave

Assault leave provides extended job income and benefits protection to an employee who is injured as the result of a physical assault suffered during the performance of his or her job. An incident involving an assault is a work-related injury, and should be immediately reported to the Superintendent. An injury is treated as an assault if the person causing the injury could be prosecuted for assault or could not be prosecuted only because that person's age or mental capacity renders the person nonresponsible for purposes of criminal liability.

An employee who is physically assaulted at work may take all the leave time medically necessary (up to two years) to recover from the physical injuries he or she sustained. At the request of an employee, the district will immediately assign the employee to assault leave. Days of leave granted under the assault leave provision will not be deducted from accrued personal leave and must be coordinated with workers' compensation benefits. Upon investigation the district may change the assault leave status and charge leave used against the employee's accrued paid leave. The employee's pay will be deducted if accrued paid leave is not available.

Bereavement Leave

Use of state leave and/or local sick leave for death in the immediate family shall not exceed five workdays per occurrence, subject to the approval of the District.

Jury Duty

Policies DEC, DG

The district provides paid leave to employees who are summoned to jury duty including service on a grand jury. The district will not discharge, threaten to discharge, intimidate, or coerce any regular employee because of juror or grand juror service or for the employee's attendance or scheduled attendance in connection with the service in any court in the United States. Employees who report to the court for jury duty may keep any compensation the court provides. An employee should report a summons for jury duty to his or her supervisor as soon as it is received and may be required to provide the district a copy of the summons to document the need for leave.

An employee may be required to report back to work as soon as they are released from jury duty. The supervisor may consider the travel time required and the nature of the individual's position when determining the need to report to work. A copy of the release from jury duty or documentation of time spent at the court may be required.

Compliance with a Subpoena

Employees will be paid while on leave to comply with a valid subpoena to appear in a civil, criminal, legislative, or administrative proceeding and will not be required to use personal leave. Employees may be required to submit documentation of their need for leave for court appearances.

Truancy Court Appearances

An employee who is a parent, guardian of a child, or a court-appointed guardian ad litem of a child who is required to miss work to attend a truancy court hearing may use personal leave or compensatory time for the absence. Employees who do not have paid leave available will be docked for any absence required because of the court appearance.

Religious Observance

The district will reasonably accommodate an employee's request for absence for a religious holiday or observance. Accommodations such as changes to work schedules or approving a day of absence will be made unless they pose an undue hardship to the district. The employee may use any accumulated personal leave for this purpose. Employees who have exhausted applicable paid leave may be granted an unpaid day of absence.

Military Leave

Paid Leave for Military Service. Any employee who is a member of the Texas National Guard, Texas State Guard, reserve component of the United States Armed Forces, or a member of a state or federally authorized Urban Search and Rescue Team is entitled to 15 days of paid leave per fiscal year when engaged in authorized training or duty ordered by proper authority. An additional seven days of leave per fiscal year are available if called to state active duty in response to a disaster. In addition, an employee is entitled to use available state and local personal or sick leave during a time of active military service.

Reemployment after Military Leave. Employees who leave the district to enter into the United States uniformed services or who are ordered to active duty as a member of the military force of any state (e.g. National or State Guard) may return to employment if they are honorably discharged. Employees who wish to return to the district will be reemployed provided they can be qualified to perform the required duties. Employees returning to work following military leave should contact the Superintendent. In most cases, the length of federal military service cannot exceed five years, and the employee must apply for reemployment within the period of time specified in law.

Continuation of Health Insurance. Employees who perform service in the uniformed services may elect to continue their health plan coverage at their own cost for a period not to exceed 24 months. Employees should contact the Payroll Department for details on eligibility, requirements, and limitations.

Leave for Peace Officers

Mental Health Leave

A District peace officer who experiences a traumatic event in the scope of employment shall be granted a maximum of five days of mental health leave per traumatic event. Such leave shall be provided in accordance with administrative regulations and shall not be deducted from the employee's pay or leave balance.

The Superintendent shall develop regulations regarding mental health leave that address the following:

Circumstances or reasons under which a peace officer may use mental health leave;

Procedures for requesting mental health leave and maintaining the anonymity of the requestor;

The administrator authorized to approve requests for mental health leave; and

Other procedures deemed necessary for administering this provision.

Quarantine Leave

A District peace officer shall be granted quarantine leave when ordered by the local health authority or the peace officer's supervisor to quarantine or isolate due to possible or known exposure to a communicable disease while on duty. Such leave shall be provided in accordance with administrative regulations and shall not be deducted from the employee's pay or leave balance.

The Superintendent shall develop regulations regarding quarantine leave that address the following:

Continuation of all employment benefits and compensation for the duration of the leave;

Reimbursement for reasonable costs related to the quarantine; and

Other procedures deemed necessary for administering this provision.

Leave for Police Officers for Illness or Injury

A full time district employed licensed police officer who regularly serves in a law enforcement capacity in a district police department is entitled to a paid leave of absence (LOA) for an illness or injury related to the person's line of duty.

If unable to return to work at the end of the paid leave and any extension, a police officer may use accumulated sick, vacation, and other accrued leave before being placed on unpaid temporary leave. At the end of temporary leave, the police officer will be reinstated at the same rank and with the same seniority the person had before going on temporary leave.

Employee Relations and Communications

Employee Recognition and Appreciation

Continuous efforts are made throughout the year to recognize employees who make an extra effort to contribute to the success of the district. Employees are recognized at board meetings, in the district newsletter, if applicable, and through special events and activities. Recognition and appreciation activities also include teacher of the year awards and teacher appreciation luncheon.

District Communications

Throughout the school year, the district offices publish newsletters, brochures, fliers, calendars, news releases, and other communication materials. These publications offer employees and the community information pertaining to school activities and achievements.

They include the following: HHS Weekly Hotline, HMS Bulletin, HES Lil Hornet Buzz, and HISD At A Glance.

Complaints and Grievances

Policy DGBA

In an effort to hear and resolve employee concerns or complaints in a timely manner and at the lowest administrative level possible, the Board has adopted an orderly grievance process. Employees are encouraged to discuss their concerns or complaints with their supervisors or an appropriate administrator at any time.

The formal process provides all employees with an opportunity to be heard up to the highest level of management if they are dissatisfied with an administrative response. Once all administrative procedures are exhausted, employees can bring concerns or complaints to the Board of Trustees. For ease of reference, the district's policy concerning the process of bringing concerns and complaints is reprinted as follows:

Guiding Principles

INFORMAL PROCESS The Board encourages employees to discuss their concerns and complaints through informal conferences with their supervisor, principal, or other appropriate administrator. Concerns should be expressed as soon as possible to allow early resolution at the lowest possible administrative level.

DIRECT COMMUNICATION WITH BOARD MEMBERS. Employees shall not be prohibited from communicating with a member of the Board regarding District operations except when communication between an employee and a Board member would be inappropriate because of a pending hearing or appeal related to the employee.

FORMAL PROCESS If an informal conference regarding a complaint fails to reach the outcome requested by the employee, he or she may initiate the formal process described below by timely filing a written complaint form. Even after initiating the formal complaint process, employees are encouraged to seek informal resolution of their concerns. An employee whose concerns are resolved may withdraw a formal complaint at any time. The process described in this policy shall not be construed to create new or additional rights beyond those granted by law or Board policy, nor to require a full evidentiary hearing or "mini-trial" at any level.

NOTICE TO EMPLOYEES The District shall inform employees of this policy.

FREEDOM FROM RETALIATION. Neither the Board nor any District employee shall unlawfully retaliate against an employee for bringing a concern or complaint.

WHISTLEBLOWER COMPLAINTS. Whistleblower complaints shall be filed within the time specified by law and may be made to the Superintendent or designee beginning at Level Two. Time lines for the employee and the District set out in this policy may be shortened to allow the Board to make a final decision within 60 calendar days of the initiation of the complaint. [See DG]

COMPLAINTS AGAINST SUPERVISORS. Complaints alleging a violation of law by a supervisor may be made to the Superintendent or designee. Complaints alleging a violation of law by the Superintendent may be made directly to the Board or designee.

COMPLAINT. In this policy, the terms "complaint" and "grievance" shall have the same meaning. This policy shall apply to all employee complaints, except as provided below.

EXCEPTIONS. This policy shall not apply to:

1. Complaints alleging discrimination, including violations of Title IX (gender), Title VII (sex, race, color, religion, national origin), ADEA (age), or Section 504 (disability). [See DIA]
2. Complaints alleging certain forms of harassment, including harassment by a supervisor and violations of Title VII. [See DIA]
3. Complaints concerning retaliation relating to discrimination and harassment. [See DIA]
4. Complaints concerning instructional materials [See EFA]
5. Complaints concerning a commissioned peace officer who is an employee of the District. [See CKE]
6. Complaints arising from the proposed nonrenewal of a term contract issued under Chapter 21 of the Education Code. [See DFBB]
7. Complaints arising from the proposed termination or suspension without pay of an employee on a probationary, term, or continuing contract issued under Chapter 21 of the Education Code during the contract term. [See DFAA, DFBA, or DFCA, respectively]

GENERAL PROVISIONS

FILING Complaint forms and appeal notices may be filed by hand-delivery, fax, or U.S. Mail. Hand-delivered filings shall be timely filed if received by the appropriate administrator or designee by the close of business on the deadline. Fax filings shall be timely filed if they are received on or before the deadline, as indicated by the date/time shown on the fax copy. Mail filings shall be timely filed if they are postmarked by U.S. Mail on or before the deadline and received by the appropriate administrator or designated representative no more than three days after the deadline.

RESPONSE At Levels One and Two, "response" shall mean a written communication to the employee from the appropriate administrator. Responses may be hand-delivered or sent by U.S. Mail to the employee's mailing address of record. Mailed responses shall be timely if they are postmarked by U.S. Mail on or before the deadline.

DAYS "Days" shall mean District business days, unless otherwise noted. In calculating time lines under this policy, the day a document is filed is "day zero." The following business day is "day one."

REPRESENTATIVE "Representative" shall mean any person who or an organization that does not claim the right to strike and is designated by the employee to represent him or her in the complaint process. The employee may designate a representative through written notice to the District at any level of this process. If the employee designates a representative with fewer than three days' notice to the District before a scheduled conference or hearing, the District may reschedule the conference or hearing to a later date, if desired, in order to include the District's counsel. The District may be represented by counsel at any level of the process.

CONSOLIDATING COMPLAINTS Complaints arising out of an event or a series of related events shall be addressed in one complaint. Employees shall not bring separate or serial complaints arising from any event or series of events that have been or could have been addressed in a previous complaint. When two or more complaints are sufficiently similar in nature and remedy sought to permit their resolution through one proceeding, the District may consolidate the complaints.

UNTIMELY FILINGS All time limits shall be strictly followed unless modified by mutual written consent. If a complaint form or appeal notice is not timely filed, the complaint may be dismissed, on written notice to the employee, at any point during the complaint process. The employee may appeal the dismissal by seeking review in writing within ten days from the date of the written dismissal notice, starting at the level at which the complaint was dismissed. Such appeal shall be limited to the issue of timeliness.

COSTS INCURRED Each party shall pay its own costs incurred in the course of the complaint.

Audio Recording Employees will be allowed to make audio recording of grievance proceeding.

COMPLAINT FORM Complaints under this policy shall be submitted in writing on a form provided by the District. Copies of any documents that support the complaint should be attached to the complaint form. If the employee does not have copies of these documents, they may be presented at the Level One conference. After the Level One conference, no new documents may be submitted by the employee unless the employee did not know the documents existed before the Level One conference. A complaint form that is incomplete in any material aspect may be dismissed, but may be refiled with all the requested information if the refiling is within the designated time for filing a complaint.

LEVEL ONE Complaint forms must be filed:

1. Within 15 days of the date the employee first knew, or with reasonable diligence should have known, of the decision or action giving rise to the complaint or grievance; and
2. With the lowest level administrator who has the authority to remedy the alleged problem.

In most circumstances, employees on a school campus shall file Level One complaints with the campus principal; other District employees shall file Level One complaints with their immediate supervisor.

If the only administrator who has authority to remedy the alleged problem is the Superintendent or designee, the complaint may begin at Level Two following the procedure, including deadlines, for filing the complaint form at Level One.

If the complaint is not filed with the appropriate administrator, the receiving administrator must note the date and time the complaint form was received and immediately forward the complaint form to the appropriate administrator. The appropriate administrator shall investigate as necessary and hold a conference with the employee within ten days after receipt of the written complaint. The administrator may set reasonable time limits for the conference. The administrator shall provide the employee a written response within ten days following the conference. The written response shall set forth the basis of the decision. In reaching a decision, the administrator may consider information provided at the Level One conference and any other relevant documents or information the administrator believes will help resolve the complaint.

LEVEL TWO If the employee did not receive the relief requested at Level One or if the time for a response has expired, the employee may request a conference with the Superintendent or designee to appeal the Level One decision. The appeal notice must be filed in writing, on a form provided by the District, within ten days of the date of the written Level One response or, if no response was received, within ten days of the Level One response deadline. After receiving notice of the appeal the Level One administrator shall prepare and forward a record of the Level One complaint to the Level Two administrator. The employee may request a copy of the Level One record.

The Level One record shall include:

1. The original complaint form and any attachments.
2. All other documents submitted by the employee at Level One.
3. The written response issued at Level One and any attachments.
4. All other documents relied upon by the Level One administrator in reaching the Level One decision.

The Superintendent or designee shall hold a conference within ten days after the appeal notice is filed. The conference shall be limited to the issues presented by the employee at Level One and identified in the Level Two appeal notice. At the conference, the employee may provide information concerning any documents or information relied upon by the administration for the Level One decision. The Superintendent or designee may set reasonable time limits for the conference. The Superintendent or designee shall provide the employee a written response within ten days following the conference. The written response shall set forth the basis of the decision. In reaching a decision, the Superintendent or designee may consider the Level One record, information provided at the Level Two conference, and any other relevant documents or information the Superintendent or designee believes will help resolve the complaint. Recordings of the Level One and Level Two conference, if any, shall be maintained with the Level One and Level Two records.

LEVEL THREE If the employee did not receive the relief requested at Level Two or if the time for a response has expired, the employee may appeal the decision to the Board. The appeal notice must be filed in writing, on a form provided by the District, within ten days of the

date of the written Level Two response or, if no response was received, within ten days of the Level Two response deadline. The Superintendent or designee shall inform the employee of the date, time, and place of the Board meeting at which the complaint will be on the agenda for presentation to the Board. The Superintendent or designee shall provide the Board the record of the Level Two complaint. The employee may request a copy of the Level Two record.

The Level Two record shall include:

1. The Level One record.
2. The written response issued at Level Two and any attachments.
3. All other documents relied upon by the administration in reaching the Level Two decision.

If at the Level Three hearing the administration intends to rely on evidence not included in the Level Two record, the administration shall provide the employee notice of the nature of the evidence at least three days before the hearing.

The District shall determine whether the complaint will be presented in open or closed meeting in accordance with the Texas Open Meetings Act and other applicable law. [See BE] The presiding officer may set reasonable time limits and guidelines for the presentation including an opportunity for the employee and administration to each make a presentation and provide rebuttal and an opportunity for questioning by the Board. The Board shall hear the complaint and may request that the administration provide an explanation for the decisions at the preceding levels.

In addition to any other record of the Board meeting required by law, the Board shall prepare a separate record of the Level Three presentation. The Level Three presentation, including the presentation by the employee or the employee's representative, any presentation from the administration, and questions from the Board with responses, shall be recorded by audio recording, video/audio recording, or court reporter. The Board shall then consider the complaint. It may give notice of its decision orally or in writing at any time up to and including the next regularly scheduled Board meeting. If the Board does not make a decision regarding the complaint by the end of the next regularly scheduled meeting, the lack of a response by the Board upholds the administrative decision at Level Two.

Employee Conduct and Welfare

Standards of Conduct

Policy DH

All employees are expected to work together in a cooperative spirit to serve the best interests of the district and to be courteous to students, one another, and the public. Employees are expected to observe the following standards of conduct:

- Recognize and respect the rights of students, parents, other employees, and members of the community.

- Maintain confidentiality in all matters relating to students and coworkers.
- Report to work according to the assigned schedule.
Notify their immediate supervisor in advance or as early as possible in the event that they must be absent or late. Unauthorized absences, chronic absenteeism, tardiness, and failure to follow procedures for reporting an absence may be cause for disciplinary action up to and including termination.
- Know and comply with department and district policies and procedures.
- Express concerns, complaints, or criticism through appropriate channels.
- Observe all safety rules and regulations and report injuries or unsafe conditions to a supervisor immediately.
- Use district time, funds, and property for authorized district business and activities only.

All district employees should perform their duties in accordance with state and federal law, district policies and procedures, and ethical standards. Violation of policies, regulations, or guidelines including intentionally making a false claim, offering false statements, or refusing to cooperate with a district investigation may result in disciplinary action, up to and including termination. Alleged incidents of certain misconduct by educators, including having a criminal record, must be reported to SBEC not later than the seventh day after the superintendent knew of the incident. See Reports to the Texas Education Agency Certification, page 67 for additional information.

Dress and Grooming

Policy DH

An employee's dress and grooming shall be clean, neat, in a manner appropriate for his or her assignment, and in accordance with any additional standards established by his or her supervisor and approved by the Superintendent.

The Educators' *Code of Ethics*, adopted by the State Board for Educator Certification, which all district employees must adhere to, is reprinted below:

Texas Educators Code of Ethics

Purpose and Scope

The Texas educator shall comply with standard practices and ethical conduct toward students, professional colleagues, school officials, parents, and members of the community and shall safeguard academic freedom. The Texas educator, in maintaining the dignity of the profession, shall respect and obey the law, demonstrate personal integrity, and exemplify honesty and good moral character. The Texas educator, in exemplifying ethical relations with colleagues, shall extend just and equitable treatment to all members of the profession. The Texas educator, in accepting a position of public trust, shall measure success by the progress of each student toward realization of his or her potential as an effective citizen. The Texas educator, in fulfilling responsibilities in the community, shall cooperate with parents and others to improve the public schools of the community. This chapter shall apply to educators and candidates for certification. (19 TAC 247.1(b))

Enforceable Standards

1. Professional Ethical Conduct, Practices, and Performance

Standard 1.1 The educator shall not intentionally, knowingly, or recklessly engage in deceptive practices regarding official policies of the school district, educational institution, educator preparation program, the Texas Education Agency, or the State Board for Educator Certification (SBEC) and its certification process.

Standard 1.2 The educator shall not intentionally, knowingly, or recklessly misappropriate, divert, or use monies, personnel, property, or equipment committed to his or her charge for personal gain or advantage.

Standard 1.3 The educator shall not submit fraudulent requests for reimbursement, expenses, or pay.

Standard 1.4 The educator shall not use institutional or professional privileges for personal or partisan advantage.

Standard 1.5 The educator shall neither accept nor offer gratuities, gifts, or favors that impair professional judgment or that are used to obtain special advantage. This standard shall not restrict the acceptance of gifts or tokens offered and accepted openly from students, parents of students, or other persons or organizations in recognition or appreciation of service.

Standard 1.6 The educator shall not falsify records, or direct or coerce others to do so.

Standard 1.7 The educator shall comply with state regulations, written local school board policies, and other state and federal laws.

Standard 1.8 The educator shall apply for, accept, offer, or assign a position or a responsibility on the basis of professional qualifications.

Standard 1.9 The educator shall not make threats of violence against school district employees, school board members, students, or parents of students.

Standard 1.10 The educator shall be of good moral character and be worthy to instruct or supervise the youth of this state.

Standard 1.11 The educator shall not intentionally, knowingly or recklessly misrepresent his or her employment history, criminal history, and/or disciplinary record when applying for subsequent employment.

Standard 1.12 The educator shall refrain from the illegal use abuse, or distribution of controlled substances prescription drugs and toxic inhalants.

Standard 1.13 The educator shall not be under the influence of alcohol or consume alcoholic beverages on school property or during school activities when students are present.

2. Ethical Conduct toward Professional Colleagues

Standard 2.1 The educator shall not reveal confidential health or personnel information concerning colleagues unless disclosure serves lawful professional purposes or is required by law.

Standard 2.2 The educator shall not harm others by knowingly making false statements about a colleague or the school system.

Standard 2.3 The educator shall adhere to written local school board policies and state and federal laws regarding the hiring, evaluation, and dismissal of personnel.

Standard 2.4 The educator shall not interfere with a colleague's exercise of political, professional, or citizenship rights and responsibilities.

Standard 2.5 The educator shall not discriminate against or coerce a colleague on the basis of race, color, religion, national origin, age, gender, disability, family status, or sexual orientation

Standard 2.6 The educator shall not use coercive means or promise of special treatment in order to influence professional decisions or colleagues.

Standard 2.7 The educator shall not retaliate against any individual who has filed a complaint with the SBEC or who provides information for a disciplinary investigation or proceeding under this chapter.

Standard 2.8 The educator shall not intentionally or knowingly subject a colleague to sexual harassment.

3. Ethical Conduct toward Students

Standard 3.1 The educator shall not reveal confidential information concerning students unless disclosure serves lawful professional purposes or is required by law.

Standard 3.2 The educator shall not intentionally, knowingly, or recklessly treat a student or minor in a manner that adversely affects or endangers the learning, physical health, mental health, or safety of the student or minor.

Standard 3.3 The educator shall not intentionally, knowingly, or recklessly misrepresent facts regarding a student.

Standard 3.4 The educator shall not exclude a student from participation in a program, deny benefits to a student, or grant an advantage to a student on the basis of race, color, gender, disability, national origin, religion, family status, or sexual orientation.

Standard 3.5 The educator shall not intentionally, knowingly, or recklessly engage in physical mistreatment, neglect, or abuse of a student or minor.

Standard 3.6 The educator shall not solicit or engage in sexual conduct or a romantic relationship with a student or minor.

Standard 3.7 The educator shall not furnish alcohol or illegal/unauthorized drugs to any person under 21 years of age unless the educator is a parent or guardian of that child or knowingly allow any person under 21 years of age unless the educator is a parent or guardian of that child to consume alcohol or illegal/unauthorized drugs in the presence of the educator.

Standard 3.8 The educator shall maintain appropriate professional educator-student relationships and boundaries based on a reasonably prudent educator standard.

Standard 3.9 The educator shall refrain from inappropriate communication with a student or minor, including, but not limited to, electronic communication such as cell phone, text messaging, email, instant messaging, blogging, or other social network communication. Factors that may be considered in assessing whether the communication is inappropriate include, but are not limited to:

- (i) the nature, purpose, timing, and amount of the communication;
- (ii) the subject matter of the communication;
- (iii) whether the communication was made openly or the educator attempted to conceal the communication;
- (iv) whether the communication could be reasonably interpreted as soliciting sexual contact or a romantic relationship;
- (v) whether the communication was sexually explicit; and
- (vi) whether the communication involved discussion(s) of the physical or sexual attractiveness or the sexual history, activities, preferences, or fantasies of either the educator or the student.

Discrimination, Harassment, and Retaliation

Policies DH, DIA

Employees shall not engage in prohibited harassment, including sexual harassment, of other employees, unpaid interns, student teachers, or students. While acting in the course of their employment, employees shall not engage in prohibited harassment of other persons, including board members, vendors, contractors, volunteers, or parents. A substantiated charge of harassment will result in disciplinary action up to and including termination.

Individuals who believe they have been discriminated or retaliated against or harassed are encouraged to promptly report such incidents to the campus principal, supervisor, or appropriate district official. If the campus principal, supervisor, or district official is the subject of a complaint, the complaint should be made directly to the Superintendent. A complaint against the Superintendent may be made directly to the Board.

Any district employee who believes that he or she has experienced prohibited conduct based on sex, including sexual harassment, or believes that another employee has experienced such prohibited conduct, should immediately report the alleged acts. The employee may report the alleged acts to his or her supervisor, the campus principal, the Title IX coordinator, or the superintendent. The district's Title IX coordinator's name and contact information is listed in the Equal Employment Opportunity section of this handbook.

The district's policy that includes definitions and procedures for reporting and investigating discrimination, harassment, and retaliation is reprinted below:

<http://pol.tasb.org/Home/Index/1045>

The District prohibits sexual harassment and harassment based on a person's race, color, gender, national origin, disability, religion, or age.

Employees shall not tolerate harassment of others and shall make reports as required at reporting procedures, below.

STATEMENT OF NONDISCRIMINATION The District prohibits discrimination, including harassment, against any employee on the basis of race, color, religion, gender, national origin, age, disability, or any other basis prohibited by law. Retaliation against anyone involved in the complaint process is a violation of District policy.

DISCRIMINATION Discrimination against an employee is defined as conduct directed at an employee on the basis of race, color, religion, gender, national origin, age, disability, or any other basis prohibited by law, that adversely affects the employee's employment.

HARASSMENT Prohibited harassment of an employee is defined as physical, verbal, or nonverbal conduct based on an employee's race, color, religion, gender, national origin, age, disability, or any other basis prohibited by law, when the conduct is so severe, persistent, or pervasive that the conduct:

1. Has the purpose or effect of unreasonably interfering with the employee's work performance;
2. Creates an intimidating, threatening, hostile, or offensive work environment; or

3. Otherwise adversely affects the employee's performance, environment or employment opportunities.

EXAMPLES Examples of prohibited harassment may include offensive or derogatory language directed at another person's religious beliefs or practices, accent, skin color, gender identity, or need for workplace accommodation; threatening or intimidating conduct; offensive jokes, name calling, slurs, or rumors; physical aggression or assault; display of graffiti or printed material promoting racial, ethnic, or other stereotypes; or other types of aggressive conduct such as theft or damage to property.

SEXUAL HARASSMENT Sexual harassment is a form of sex discrimination defined as unwelcome sexual advances; requests for sexual favors; sexually motivated physical, verbal, or nonverbal conduct; or other conduct or communication of a sexual nature when:

1. Submission to the conduct is either explicitly or implicitly a condition of an employee's employment, or when submission to or rejection of the conduct is the basis for an employment action affecting the employee; or
2. The conduct is so severe, persistent, or pervasive that it has the purpose or effect of unreasonably interfering with the employee's work performance or creates an intimidating, threatening, hostile, or offensive work environment.

EXAMPLES Examples of sexual harassment may include, sexual advances; touching intimate body parts; coercing or forcing a sexual act on another; jokes or conversations of a sexual nature; and other sexually motivated conduct, communication, or contact.

RETALIATION The District prohibits retaliation against an employee who makes a claim alleging to have experienced discrimination or harassment, or another employee who, in good faith, makes a report, serves as a witness, or otherwise participates in an investigation. An employee who intentionally makes a false claim, offers false statements, or refuses to cooperate with a District investigation regarding harassment or discrimination is subject to appropriate discipline.

EXAMPLES Examples of retaliation may include termination, refusal to hire, demotion, and denial of promotion. Retaliation may also include threats, unjustified negative evaluations, unjustified negative references, or increased surveillance.

PROHIBITED CONDUCT In this policy, the term "prohibited conduct" includes discrimination, harassment, and retaliation as defined by this policy, even if the behavior does not rise to the level of unlawful conduct.

REPORTING PROCEDURES An employee who believes that he or she has experienced prohibited conduct or believes that another employee has experienced prohibited conduct should immediately report the alleged acts. The employee may report the alleged acts to his or her supervisor or campus principal. Alternatively, the employee may report the alleged acts to one of the District officials below.

DEFINITION OF DISTRICT OFFICIALS For the purposes of this policy, District officials are the Title IX coordinator, the ADA/Section 504 coordinator, and the Superintendent.

TITLE IX COORDINATOR Reports of discrimination based on sex, including sexual harassment, may be directed to the Title IX coordinator. The District designates the following person to coordinate its efforts to comply with Title IX of the Education Amendments of 1972, as amended:

Name: Stephen English

Position: Superintendent

Address: P.O. Box 1950, Hemphill, Texas 75948

Telephone: (409) 787-3371

ADA/SECTION 504 COORDINATOR Reports of discrimination based on disability may be directed to the ADA/Section 504 coordinator. The District designates the following person to coordinate its efforts to comply with Title II of the Americans with Disabilities Act of 1990, which incorporates and expands upon the requirements of Section 504 of the Rehabilitation Act of 1973:

Name: Stephen English

Position: Superintendent

Address: P.O. Box 1950, Hemphill, Texas 75948

Telephone: (409) 787 – 3371

SUPERINTENDENT The Superintendent shall serve as coordinator for purposes of District compliance with all other antidiscrimination laws.

ALTERNATIVE REPORTING PROCEDURES An employee shall not be required to report prohibited conduct to the person alleged to have committed it. Reports concerning prohibited conduct, including reports against the Title IX coordinator or ADA/Section 504 coordinator, may be directed to the Superintendent. A report against the Superintendent may be made directly to the Board. If a report is made directly to the Board, the Board shall appoint an appropriate person to conduct an investigation.

TIMELY REPORTING Reports of prohibited conduct shall be made as soon as possible after the alleged act or knowledge of the alleged act. A failure to promptly report may impair the District's ability to investigate and address the prohibited conduct.

A District employee may report harassment to his or her supervisor or campus principal. A person shall not be required to report harassment to the alleged harasser; nothing in this policy prevents a person from reporting harassment directly to another District official.

NOTICE OF REPORT Any District supervisor who receives a report of prohibited conduct shall immediately notify the appropriate District official listed above and take any other steps required by this policy.

INVESTIGATION OF THE REPORT The District may request, but shall not insist upon, a written report. If a report is made orally, the District official shall reduce the report to written form.

Upon receipt or notice of a report, the District official shall determine whether the allegations, if proven, would constitute prohibited conduct as defined by this policy. If so, the District official shall immediately authorize or undertake an investigation, regardless of whether a criminal or regulatory investigation regarding the same or similar allegations is pending.

If appropriate, the District shall promptly take interim action calculated to prevent prohibited conduct during the course of an investigation.

The investigation may be conducted by the District official or a designee, such as the campus principal, or by a third party designated by the District, such as an attorney. When appropriate, the campus principal or supervisor shall be involved in or informed of the investigation.

The investigation may consist of personal interviews with the person making the report, the person against whom the report is filed, and others with knowledge of the circumstances surrounding the allegations. The investigation may also include analysis of other information or documents related to the allegations.

CONCLUDING THE INVESTIGATION Absent extenuating circumstances, the investigation should be completed within ten District business days from the date of the report; however, the investigator shall take additional time if necessary to complete a thorough investigation.

The investigator shall prepare a written report of the investigation. The report shall be filed with the District official overseeing the investigation.

DISTRICT ACTION If the results of an investigation indicate that prohibited conduct occurred, the District shall promptly respond by taking appropriate disciplinary or corrective action reasonably calculated to address the conduct.

The District may take action based on the results of an investigation, even if the conduct did not rise to the level of prohibited or unlawful conduct.

CONFIDENTIALITY To the greatest extent possible, the District shall respect the privacy of the complainant, persons against whom a report is filed, and witnesses. Limited disclosures may be necessary in order to conduct a thorough investigation and comply with applicable law.

APPEAL A complainant who is dissatisfied with the outcome of the investigation may appeal through DGBA(LOCAL), beginning at the appropriate level.

The complainant may have a right to file a complaint with appropriate state or federal agencies.

RECORDS RETENTION Copies of reports alleging prohibited conduct, investigation reports, and related records shall be maintained by the District for a period of at least three years. [See CPC]

ACCESS TO POLICY This policy shall be distributed annually to District employees. Copies of the policy shall be readily available at each campus and the District administrative offices.

Harassment of Students

Policies DH, DHB, FFG, FFH, FFI

Sexual and other harassment of students by employees are forms of discrimination and are prohibited by law. Romantic or inappropriate social relationships between students and district employees are prohibited.

Employees who suspect a student may have experienced prohibited harassment are obligated to report their concerns to the campus principal or other appropriate district official. Any district employee who suspects or receives direct or indirect notice that a student or group of students has or may have experienced prohibited conduct based on sex, including sexual harassment, of a student shall immediately notify the district's Title IX coordinator, the ADA/Section 504 coordinator, or superintendent and take any other steps required by district policy.

All allegations of prohibited harassment of a student by an employee or adult will be reported to the student's parents and promptly investigated. An employee who knows of or has reasonable cause to believe that child abuse or neglect occurred must also report his or her knowledge or suspicion to the appropriate authorities, as required by law. See *Reporting Suspected Child Abuse* for additional information. [See page 57] [and Bullying page 71 for additional information.]

The district's policy that includes definitions and procedures for reporting and investigating harassment of students is reprinted below:

The District prohibits sexual harassment and harassment based on a person's race, color, gender, national origin, disability, or religion.

Employees shall not tolerate harassment of students and shall make reports as required at REPORTING PROCEDURES, below.

SEXUAL HARASSMENT

BY AN EMPLOYEE

Sexual harassment of a student by a District employee includes both welcome and unwelcome sexual advances; requests for sexual favors; sexually motivated physical, verbal, or nonverbal conduct; or other conduct or communication of a sexual nature when:

1. A District employee causes the student to believe that the student must submit to the conduct in order to participate in a school program or activity, or that the employee will make an educational decision based on whether or not the student submits to the conduct; or
2. The conduct is so severe, persistent, or pervasive that it:
 - a. Affects the student's ability to participate in or benefit from an educational program or activity, or otherwise adversely affects the student's educational opportunities; or
 - b. Creates an intimidating, threatening, hostile, or abusive educational environment.

Romantic or inappropriate social relationships between students and District employees are prohibited. Any sexual relationship between a student and a District employee is always prohibited, even, if consensual.

BY OTHERS Sexual harassment of a student, including harassment committed by another student, includes unwelcome sexual advances; requests for sexual favors; or sexually motivated physical, verbal, or nonverbal conduct when the conduct is so severe, persistent, or pervasive that it:

1. Affects a student's ability to participate in or benefit from an educational program or activity, or creates an intimidating, threatening, hostile, or offensive educational environment;
2. Has the purpose or effect of substantially or unreasonably interfering with the student's academic performance; or
3. Otherwise adversely affects the student's educational opportunities.

EXAMPLES Examples of sexual harassment of a student may include, but are not limited to, sexual advances; touching intimate body parts or coercing physical contact that is sexual in nature; jokes or conversations of a sexual nature; and other sexually motivated conduct, communications, or contact.

Necessary or permissible physical contact such as assisting a child by taking the child's hand, comforting a child with a hug, or other physical contact not reasonably construed as sexual in nature is not sexual harassment.

OTHER PROHIBITED HARASSMENT Prohibited harassment of a student is defined as physical, verbal, or nonverbal conduct based on the student's race, color, gender, national origin, disability, or religion that is so severe, persistent, or pervasive that the conduct:

1. Affects a student's ability to participate in or benefit from an educational program or activity, or creates an intimidating, threatening, hostile, or offensive educational environment;
2. Has the purpose or effect of substantially or unreasonably interfering with the student's academic performance; or
3. Otherwise adversely affects the student's educational opportunities.

EXAMPLES Examples of prohibited harassment may include, but are not limited to, offensive or derogatory language directed at another person's religious beliefs or practices, accent, skin color, or need for accommodation; threatening or intimidating conduct; offensive jokes, name calling, slurs, or rumors; physical aggression or assault; display of graffiti or printed material promoting racial, ethnic, or other negative stereotypes; or other kinds of aggressive conduct such as theft or damage to property.

REPORTING PROCEDURES Any student who believes that he or she has experienced prohibited harassment should immediately report the alleged acts to a teacher, counselor, principal, or other District employee.

Any District employee who receives notice that a student has or may have experienced prohibited harassment is required to immediately report the alleged acts to an appropriate person designated below.

Any other person who knows or believes that a student has experienced prohibited harassment should immediately report the alleged acts to the appropriate person designated below.

Reports of known or suspected child abuse or neglect shall be made as required by law. [See FFG]

TIMELY REPORTING Reports of harassment shall be made as soon as possible after the alleged acts. A failure to promptly report alleged harassment may impair the District's ability to investigate and address the harassment.

Oral or written reports of prohibited harassment shall normally be made to the campus principal. A person shall not be required to report harassment to the alleged harasser; nothing in this policy prevents a person from reporting harassment directly to one of the District officials below:

DISTRICT OFFICIALS

1. For sexual harassment, the Title IX coordinator. [See FB(LOCAL)]
2. For all other prohibited harassment, the Superintendent.

A report against the Title IX coordinator may be made directly to the Superintendent; a report against the Superintendent may be made directly to the Board.

NOTIFICATION OF REPORT Upon receipt of a report of harassment, a principal shall immediately notify the appropriate District official listed above.

NOTICE TO PARENTS The principal or District official shall promptly notify the parents of any student alleged to have experienced prohibited harassment by a District employee or another adult associated with the District. In cases of student-to-student harassment, the District shall promptly notify the parents of any student alleged to have experienced harassment when the allegations presented, if proven, would constitute sexual harassment or other prohibited harassment as defined by District policy.

CONFIDENTIALITY To the greatest extent possible, the District shall respect the privacy of the complainant, persons against whom a report is filed, and witnesses. Limited disclosures may be necessary in order to conduct a thorough investigation and comply with applicable law.

INVESTIGATION OF THE REPORT The District may request, but shall not insist upon, a written report. If a report is made orally, the District official shall reduce the report to written form.

Upon receipt or notification of a report, the District official shall determine whether the allegations, if proven, would constitute sexual harassment or other prohibited harassment as defined by District policy. If so, the District official shall immediately authorize or undertake an investigation. If appropriate, the District shall promptly take interim action to prevent harassment during the course of an investigation.

The investigation may be conducted by the District official or a designee, such as the campus principal, or by a third party designated by the District, such as an attorney. When appropriate, the campus principal shall be involved in or informed of the investigation.

The investigation may consist of personal interviews with the person making the report, the person against whom the report is filed, and others with knowledge of the circumstances surrounding the allegations. The investigation may also include analysis of other information or documents related to the allegations.

The District's obligation to conduct an investigation is not satisfied by the fact that a criminal or regulatory investigation regarding the same or similar allegations is pending.

CONCLUDING THE INVESTIGATION Absent extenuating circumstances, the investigation should be completed within ten business days from the date of the report; however, the investigator shall take additional time if necessary to complete a thorough investigation.

The investigator shall prepare a written report of the investigation. The report shall be filed with the District official overseeing the investigation.

DISTRICT ACTION If the results of an investigation indicate that prohibited harassment occurred, the District shall promptly respond by taking appropriate disciplinary or corrective action reasonably calculated to address the harassment.

The District may take disciplinary action based on the results of an investigation, even if the District concludes that the conduct did not rise to the level of harassment prohibited by law or District policy.

APPEAL A student, including a complainant, may appeal through FNG(LOCAL), beginning at the appropriate level. A complainant shall be informed of his or her right to file a complaint with the United States Department of Education Office for Civil Rights.

RETALIATION PROHIBITED Retaliation against a student alleged to have experienced harassment, a witness, or another person who makes a report or participates in an investigation is strictly prohibited. A person who makes a good faith report of prohibited harassment shall not suffer retaliation for making the report. A person who intentionally makes a false claim, offers false statements, or refuses to cooperate with a District investigation regarding prohibited harassment is subject to appropriate discipline.

RECORDS RETENTION Retention of records shall be in accordance with FB(LOCAL).

ACCESS TO POLICY Information regarding this policy shall be distributed annually to District employees and included in the student handbook. Copies of the policy shall be readily available at each campus and the District's administrative offices.

Reporting Suspected Child Abuse

Policies DG, GRA

All employees with reasonable cause to believe that a child's physical or mental health or welfare has been adversely affected by abuse or neglect, as defined by Texas Family Code 26.001, are required by state law to make a report to a law enforcement agency, Child

Protective Services (CPS), or appropriate state agency (e.g., state agency operating, licensing, certifying, or registering a facility) within 48 hours of the event that led to the suspicion. Alleged abuse or neglect involving a person responsible for the care, custody, or welfare of the child (including a teacher) must be reported to CPS.

Employees are also required to make a report if they have reasonable cause to believe that an adult was a victim of abuse or neglect as a child and they determine in good faith that the disclosure of the information is necessary to protect the health and safety of another child elderly person, or person with a disability.

Reports to Child Protective Services can be made online at <https://www.txabusehotline.org/Login?Default.aspx> or to the Texas Abuse Hotline (800-252-5400). State law specifies that an employee may not delegate to or rely on another person or administrator to make the report.

Under state law, any person reporting or assisting in the investigation of reported child abuse or neglect is immune from liability unless the report is made in bad faith or with malicious intent. In addition, the district is prohibited from taking an adverse employment action against a certified or licensed professional who, in good faith, reports child abuse or neglect or who participates in an investigation regarding an allegation of child abuse or neglect.

An employee's failure to report suspected child abuse may result in prosecution as a Class A misdemeanor. The offense of failure to report by a professional may be a state jail felony if it is shown the individual intended to conceal the abuse or neglect. In addition, a certified employee's failure to report suspected child abuse may result in disciplinary procedures by SBEC for a violation of the Texas Educators Code of Ethics.

Employees who suspect that a student has been or may be abused or neglected should also report their concerns to the campus principal. This includes students with disabilities who are no longer minors. Employees are not required to report their concern to the principal before making a report to the appropriate agency.

Reporting the concern to the principal does not relieve the employee of the requirement to report it to the appropriate state agency. In addition, employees must cooperate with investigators of child abuse and neglect. Interference with a child abuse investigation by denying an interviewer's request to interview a student at school or requiring the presence of a parent or school administrator against the desires of the duly authorized investigator is prohibited.

Sexual Abuse and Maltreatment of Children

The district has established a plan for addressing sexual abuse and other maltreatment of children, which may be accessed in the District Improvement Plan. As an employee, it is important for you to be aware of warning signs that could indicate a child may have been or is being sexually abused or otherwise maltreated. Sexual abuse in the Texas Family Code is defined as any sexual conduct harmful to a child's mental, emotional, or physical welfare as well as a failure to make a reasonable effort to prevent sexual conduct with a child. Maltreatment is defined as abuse or neglect. Anyone who has reasonable cause to believe that a child has been or may be abused or neglected has a legal responsibility under state law for reporting the suspected abuse or neglect following the procedures described above in Reporting Suspected Child Abuse.

Reporting Crime

Policy DG

The Texas Whistleblower Act protects district employees who make good faith reports of violations of law by the district to an appropriate law enforcement authority. The district is prohibited from suspending, terminating the employment of, or taking other adverse personnel action against, an employee who makes a report under the Act. State law also provides employees with the right to report a crime witnessed at the school to any peace officer with authority to investigate the crime.

Scope and Sequence

Policy DG

If a teacher determines that students need more or less time in a specific area to demonstrate proficiency in the Texas Essential Knowledge and Skills (TEKS) for that subject and grade level, the district will not penalize the teacher for not following the district's scope and sequence.

The district may take appropriate action if a teacher does not follow the district's scope and sequence based on documented evidence of a deficiency in classroom instruction. This documentation can be obtained through observation or substantiated and documented third-party information.

Technology Resources

Policy CQ

The district's technology resources, including its networks, computer systems, email accounts, devices connected to its networks, and all district owned devices used on or off school property are primarily for administrative and instructional purposes. Limited personal use is permitted if the use:

- Imposes no tangible cost to the district
- Does not unduly burden the district's technology resources
- Has no adverse effect on job performance or on a student's academic performance

Electronic mail transmissions and other use of the technology resources are not confidential and can be monitored at any time to ensure appropriate use.

Employees are required to abide by the provisions of the district's acceptable use agreement and administrative procedures. Failure to do so can result in suspension of access or termination of privileges and may lead to disciplinary and legal action. Employees with questions about computer use and data management can contact the Technology Director.

Personal Use of Electronic Communications

Policies CQ, DH

Electronic communications includes all forms of social media, such as text messaging, instant messaging, electronic mail (e-mail), web logs (blogs), wikis, electronic forums (chat rooms), video-sharing websites (e.g., YouTube), editorial comments posted on the Internet, and social

network sites (e.g., Facebook, Twitter, LinkedIn, Instagram). Electronic communications also includes all forms of telecommunication such as landlines, cell phones, and web-based applications.

As role models for the district's students, employees are responsible for their public conduct even when they are not acting as district employees. Employees will be held to the same professional standards in their public use of electronic communications as they are for any other public conduct. If an employee's use of electronic communications interferes with the employee's ability to effectively perform his or her job duties, the employee is subject to disciplinary action, up to and including termination of employment. If an employee wishes to use a social network site or similar media for personal purposes, the employee is responsible for the content on the employee's page, including content added by the employee, the employee's friends, or members of the public who can access the employee's page, and for web links on the employee's page. The employee is also responsible for maintaining privacy settings appropriate to the content.

An employee who uses electronic communications for personal purposes shall observe the following:

- *The employee may not set up or update the employee's personal social network page(s) using the district's computers, network, or equipment.

- *The employee shall limit use of personal electronic communication devices to send or receive calls, text messages, pictures, and videos to breaks, meal times, and before and after scheduled work hours, unless there is an emergency or the use is authorized by a supervisor to conduct district business.

- *The employee shall not use the district's logo or other copyrighted material of the district without express, written consent.

- *An employee may not share or post, in any format, information, videos, or pictures obtained while on duty or on district business unless the employee first obtains written approval from the employee's immediate supervisor. Employees should be cognizant that they have access to information and images that, if transmitted to the public, could violate privacy concerns.

- *The employee continues to be subject to applicable state and federal laws, local policies, administrative regulations, and the Texas Educators' Code of Ethics, even when communicating regarding personal and private matters, regardless of whether the employee is using private or public equipment, on or off campus. These restrictions include:

 - *Confidentiality of students records (See Policy FL)

 - *Confidentiality of health or personnel information concerning colleagues, unless disclosure serves lawful professional purposes or is required by law (See DH (Exhibit))

 - *Confidentiality of district records, including educator evaluations and private e-mail addresses. (See Policy GBA)

 - *Copyright law (See Policy CY)

 - *Prohibition against harming others by knowingly making false statements about a colleague or the school system. (See DH (Exhibit))

See Electronic Communications between Employees Students, and Parents below, for regulations on employee communication with students through electronic media.

Electronic Communications between Employees, Students, and Parents

Policy DH

A certified or licensed employee, or any other employee designated in writing by the Superintendent or a campus Principal, may use electronic communications with students who are currently enrolled in the district. The employee must comply with the provisions outlined below. Electronic communications between all other employees and students who are enrolled in the district are prohibited.

Employees are not required to provide students with their personal phone number or email address.

An employee is not subject to the provisions regarding electronic communications with a student to the extent the employee has a social or family relationship with a student. For example, an employee may have a relationship with a niece or nephew, a student who is the child of an adult friend, a student who is a friend of the employee's child, or a member or participant in the same civic, social, recreational, or religious organization. An employee who claims an exception based on a social relationship shall provide written consent from the student's parent. The written consent shall include an acknowledgement by the parent that:

- *The employee has provided the parent with a copy of this protocol.
- *The employee and the student have a social relationship outside of school.
- *The parent understands that the employee's communications with the student are excepted from district regulation, and.
- *The parent is solely responsible for monitoring electronic communications between the employee and the student.

The following definitions apply for the use of electronic media with students:

*Electronic communications means any communication facilitated by the use of any electronic device, including a telephone, cellular telephone, computer, computer network, personal data assistant, or pager. The term includes email, text messages, instant messages, and any communication made through an Internet website, including a social media website or a social networking website.

*Communicate means to convey information and includes a one-way communication as well as a dialogue between two or more people. A public communication by an employee that is not targeted at students (e.g., a posting on the employee's personal social network page or a blog) is not a communication: however, the employee may be subject to district regulations on personal electronic communications. See Personal Use of Electronic Media, above. Unsolicited contact from a student through electronic means is not a communication.

*Certified or licensed employee means a person employed in a position requiring SBEC certification or a professional license, and whose job duties may require the employee to communicate electronically with students. The term includes classroom teachers, counselors, principals, librarians, paraprofessionals, nurses, educational diagnosticians, licensed therapists, and athletic trainers.

An employee who communicates electronically with students shall observe the following:

The employee is prohibited from knowingly communicating with students using any form of electronic communications, including mobile and web applications, that are not provided or accessible by the district unless a specific exception is noted below.

Only a teacher, trainer, or other employee who has an extracurricular duty may use text messaging, and then only to communicate with students who participate in the extracurricular activity over which the employee has responsibility. An employee who communicates with a student using text messaging shall comply with the following protocol:

- *The employee shall include at least one of the student's parents or guardians as a recipient on each text message to the student so that the student and parent receive the same message.

- *The employee shall include his or her immediate supervisor as a recipient on each text message to the student so that the student and supervisor receive the same message, or;

- *For each text message addressed to one or more students, the employee shall send a copy of the text message to the employee's district e-mail address.

- *The employee shall limit communications to matters within the scope of the employee's professional responsibilities (e.g., for classroom teachers, matters relating to class work, homework, and tests; for an employee with an extracurricular duty, matters relating to the extracurricular activity.)

- *The employee is prohibited from knowingly communicating with students through a personal social network page; the employee must create a separate social network page ("professional page") for the purpose of communicating with students. The employee must enable administration and parents to access the employee's professional page.

- *The employee does not have a right to privacy with respect to communications with students and parents.

- *The employee continues to be subject to applicable state and federal laws, local policies, administrative regulations, and the Texas Educators' Code of Ethics including:

- *Compliance with the Public Information Act and the Family Educational Rights and Privacy Act (FERPA), including retention and confidentiality of student records.
(See Policies CPC and FL)

- *Copyright law (See Policy CY)

- *Prohibitions against soliciting or engaging in sexual conduct or a romantic relationship with a student. (See Policy DH)

- *Upon request from administration, an employee will provide the phone number(s), social network site(s), or other information regarding the method(s) of electronic media the employee uses to communicate with one or more currently-enrolled students.

*Upon written request from a parent or student, the employee shall discontinue communicating with the student through e-mail, text messaging, instant messaging, or any other form of one-to-one communication.

An employee may request an exception from one or more of the limitations above by submitting a written request to his or her immediate supervisor.

All staff are required to use school email accounts for all electronic communications with parents. Communication about school issues through personal email accounts or text messages are not allowed as they cannot be preserved in accordance with the district's record retention policy.

An employee shall notify his or her supervisor in writing within one business day if a student engages in an improper electronic communication with the employee. The employee should describe the form and content of the electronic communication.

Public Information on Private Devices

Policy DH, GB

Employees should not maintain district information on privately owned devices. Any district information must be forwarded or transferred to the district to be preserved. The district will take reasonable efforts to obtain public information in compliance with the Public Information Act. Reasonable efforts may include:

- Verbal or written directive
- Remote access to district-owned devices and services

Criminal History Background Checks

Policy DBAA

Employees may be subject to a review of their criminal history record information at any time during employment. National criminal history checks based on an individual's fingerprints, photo, and other identification will be conducted on certain employees and entered into the Texas Department of Public Safety (DPS) Clearinghouse. This database provides the district and SBEC with access to an employee's current national criminal history and updates to the employee's subsequent criminal history.

Employee Arrests and Convictions

Policies DH, DHB, DHC

An employee must notify his or her principal or immediate supervisor within three calendar days of any arrest, indictment, conviction, no contest or guilty plea, or other adjudication of any felony, and any of the other offenses listed below:

- * Crimes involving school property or funds
- * Crimes involving attempt by fraudulent or unauthorized means to obtain or alter any certificate or permit that would entitle any person to hold or obtain a position as an educator
- * Crimes that occur wholly or in part on school property or at a school-sponsored activity
- * Crimes involving moral turpitude

Moral turpitude includes the following:

- Dishonesty
- Fraud
- Deceit
- Theft
- Misrepresentation
- Deliberate violence
- Base, vile, or depraved acts that are intended to arouse or gratify the sexual desire of the actor
- Crimes involving any felony possession or conspiracy to possess, or any misdemeanor or felony transfer, sale, distribution, or conspiracy to transfer, sell, or distribute any controlled substance
- Felonies involving driving while intoxicated (DWI)
- Acts constituting abuse or neglect under the Texas Family Code.

If an educator is arrested or criminally charged, the superintendent is also required to report the educators' criminal history to the Division of Investigations at TEA.

Certified Employees. The superintendent and directors are required to report the misconduct or criminal history of a certified employee or individual applying for certification or permit to TEA Division of Educator Investigations. Information about misconduct or allegations of misconduct of a certified employee obtained by a means other than the criminal history clearinghouse that results in termination, resignation, or criminal history (e.g., arrest, indictment, prosecution, conviction, or other disposition by the criminal justice system, including probation and deferred adjudication) will be reported to TEA.

Misconduct or allegations of misconduct include:

Abused or otherwise committed an unlawful act with a student or minor

Possessed, transferred, sold, or distributed a controlled substance

Illegally transferred, appropriated, or expended school property or funds

Attempted by fraudulent means to obtain or alter any certificate or permit to gain employment or additional compensation

Committed a criminal offense on school property or at a school sponsored event, or

Solicited or engaged in sexual conduct or a romantic relationship with a student or minor

Uncertified Employees. Misconduct or criminal history of an uncertified employee also must be reported to TEA. Information about misconduct or the allegations of misconduct obtained by a means other than the criminal history clearinghouse that results in termination, resignations, or criminal history (e.g. arrest, indictment, prosecution, conviction, or other disposition by the criminal justice system, including probation and deferred adjudication) will be reported to TEA.

Misconduct or allegations of misconduct include:

Abuse or unlawful act with a student or minor, or

Involvement in a romantic relationship with or solicited or engaged in sexual contact with a student or minor

Alcohol- and Drug-Abuse Prevention

Policy DH

Hemphill ISD is committed to maintaining an alcohol and drug-free environment and will not tolerate the use of alcohol and illegal drugs in the workplace and at school-related or school-sanctioned activities on or off school property. Employees who use or are under the influence of alcohol or illegal drugs as defined by the Texas Controlled Substances Act during working hours may be dismissed. The district's policy regarding employee drug use follows:

<http://pol.tasb.org/Home/Index/1045>

ALCOHOL AND DRUGS Employees shall not manufacture, distribute, dispense, possess, use, or be under the influence of any of the following substances during working hours while at school or at school-related activities during or outside of usual working hours:

1. Any controlled substance or dangerous drug as defined by law, including but not limited to marijuana, any narcotic drug, hallucinogen, stimulant, depressant, amphetamine, or barbiturate.
2. Alcohol or any alcoholic beverage.
3. Any abusable glue, aerosol paint, or any other chemical substance for inhalation.
4. Any other intoxicant, or mood-changing, mind-altering, or behavior-altering drugs.

An employee need not be legally intoxicated to be considered "under the influence" of a controlled substance.

DRUG-FREE SCHOOLS REQUIREMENTS

The District prohibits the unlawful distribution, possession, or use of illegal drugs, inhalants, and alcohol on school premises or as part of any of the District's activities.

Employees who violate this prohibition shall be subject to disciplinary sanctions. Such sanctions may include referral to drug and alcohol counseling or rehabilitation programs or employee assistance programs, termination from employment with the District, and referral to appropriate law enforcement officials for prosecution. [See policies at DH and DHE] 41 U.S.C. 702(a)(1)(A); 28 TAC169.2

Compliance with these requirements and prohibitions is mandatory and is a condition of employment.

[This notice complies with notice requirements imposed by the federal Drug-Free Schools and Communities Act Amendments of 1989 (20 U.S.C. 3224a and 34 CFR 86.201)]

Tobacco Products and E-Cigarette Use

Policies DH, FNCD, GKA

State law prohibits smoking, using tobacco products or e-cigarettes on all district-owned property and at school-related or school-sanctioned activities, on or off school property. HISD also prohibits the use of electronic cigarettes and other smokeless products. This includes all

buildings, playground areas, parking facilities, and facilities used for athletics and other activities. Drivers of district-owned vehicles are prohibited from smoking, using tobacco products or e-cigarettes while inside the vehicle. Notices stating that smoking is prohibited by law and punishable by a fine are displayed in prominent places in all school buildings.

Fraud and Financial Impropriety

Policy CAA

All employees should act with integrity and diligence in duties involving the district's financial resources. The district prohibits fraud and financial impropriety, as defined below. Fraud and financial impropriety include the following:

- Forgery or unauthorized alteration of any document or account belonging to the district
- Forgery or unauthorized alteration of a check, bank draft, or any other financial document
- Misappropriation of funds, securities, supplies, or other district assets including employee time
- Impropriety in the handling of money or reporting of district financial transactions
- Profiteering as a result of insider knowledge of district information or activities
- Unauthorized disclosure of confidential or proprietary information to outside parties
- Unauthorized disclosure of investment activities engaged in or contemplated by the district
- Accepting or seeking anything of material value from contractors, vendors, or other persons providing services or materials to the district, except as otherwise permitted by law or district policy
- Destroying, removing, or inappropriately using records, furniture, fixtures, or equipment
- Failing to provide financial records required by state or local entities
- Failure to disclose conflicts of interest as required by policy
- Any other dishonest act regarding the finances of the district
- Failure to comply with requirements imposed by law, the awarding agency, or a pass-through entity for state and federal awards

Conflict of Interest

Policies CB, DBD

Employees are required to disclose in writing to the district any situation that creates a potential conflict of interest with proper discharge of assigned duties and responsibilities or creates a potential conflict of interest with the best interests of the district. This includes the following:

- A personal financial interest
- A business interest
- Any other obligation or relationship
- Non-school employment

Employees should contact their supervisor for additional information.

Gifts and Favors

Policy DBD

Employees may not accept gifts or favors that could influence, or be construed to influence, the employee's discharge of assigned duties. The acceptance of a gift, favor, or service by an administrator or teacher that might reasonably tend to influence the selection of textbooks,

electronic textbooks, instructional materials or technological equipment may result in prosecution of a Class B misdemeanor offense. This does not include staff development, teacher training, or instructional materials, such as maps or worksheets, that convey information to students or contribute to the learning process.

Copyrighted Materials

Policy CY

Employees are expected to comply with the provisions of federal copyright law relating to the unauthorized use, reproduction, distribution, performance, or display of copyrighted materials (i.e., printed material, videos, computer data and programs, etc.). Electronic media, including motion pictures and other audiovisual works, are to be used in the classroom for instructional purposes only. Duplication or backup of computer programs and data must be made within the provisions of the purchase agreement.

Associations and Political Activities

Policy DGA

The district will not directly or indirectly discourage employees from participating in political affairs or require any employee to join any group, club, committee, organization, or association. Employees may join or refuse to join any professional association or organization.

An individual's employment will not be affected by membership or a decision not to be a member of any employee organization that exists for the purpose of dealing with employers concerning grievances, labor disputes, wages, rates of pay, hours of employment, or conditions of work.

Use of district resources, including work time, for political activities is prohibited.

Charitable Contributions

Policy DG

The Board or any employee may not directly or indirectly require or coerce an employee to make a contribution to a charitable organization or in response to a fundraiser. Employees cannot be required to attend a meeting called for the purpose of soliciting charitable contributions. In addition, the Board or any employee may not directly or indirectly require or coerce an employee to refrain from making a contribution to a charitable organization or in response to a fund raiser or attending a meeting called for the purpose of soliciting charitable contributions.

Safety and Security

Policy CK series

The district has developed and promotes a comprehensive program to ensure the safety and security of its employees, students, and visitors. The safety and security program includes written guidelines and procedures for responding to emergencies and activities to help reduce the frequency of accidents and injuries.

Employees must follow established protocols and response to emergencies for each campus and department. Refer to written security procedures specific to your location and work area.

To prevent or minimize injuries to employees, coworkers, and students and to protect and conserve district equipment, employees must comply with the following requirements:

- Observe all safety rules.
- Keep work areas clean and orderly at all times.
- Immediately report all accidents to their supervisor.
- Operate only equipment or machines for which they have training and authorization.

While driving on district business, employees are required to abide by all state and local traffic laws. Employees driving on district business are prohibited from texting and using other electronic devices that require both visual and manual attention while the vehicle is in motion. Employees will exercise care and sound judgment on whether to use hands-free technology while the vehicle is in motion.

Employees with questions or concerns relating to safety programs and issues can contact the Director of Maintenance.

Possession of Firearms and Weapons

Policies DH, FNCG, GKA

Employees, visitors, and students including those with a license to carry a handgun are prohibited from bringing firearms, knives, clubs or other prohibited weapons onto school premises (i.e., building or portion of a building) or any grounds or building where a school-sponsored activity takes place. A person, including an employee, who holds a license to carry a handgun may transport or store a handgun or other firearm or ammunition in a locked vehicle in a parking lot, garage, or other district provided parking area, provided the handgun or firearm or ammunition is properly stored, and not in plain view. To ensure the safety of all persons, employees who observe or suspect a violation of the district's weapons policy should report it to their supervisors or call the Superintendent immediately.

Visitors in the Workplace

Policy GKC

All visitors are expected to enter any district facility through the main entrance and sign in or report to the building's main office. Authorized visitors will receive directions or be escorted to their destination. Employees who observe an unauthorized individual on the district premises should immediately direct him or her to the building office or contact the administrator in charge.

Asbestos Management Plan

Policy CKA

The district is committed to providing a safe environment for employees. An accredited management planner has developed an Asbestos Management Plan for each school. A copy of the District's Management Plan is kept in the Principal's office as well as the school's Central Administration Office and is available for inspection during normal business hours.

Pest Control Treatment

Policies CLB, DI

Employees are prohibited from applying any pesticide or herbicide without appropriate training and prior approval of the Integrated Pest Management (IPM) Coordinator. Any application of pesticide or herbicide must be done in a manner prescribed by law and the district's Integrated Pest Management Program.

Notices of planned pest control treatment will be posted in a district building 48 hours before the treatment begins. Notices are generally located on the bulletin boards located on each campus. In addition, individual employees may request in writing to be notified of pesticide applications. An employee who requests individualized notice will be notified by telephone, written, or electric means. Pest control information sheets are available from campus principals or facility managers upon request.

General Procedures

Activity Funds

CFD (LOCAL)

For information on student activity funds please contact Sandra Easley at ext. 2270.

Emergency School Closing

The district may close schools because of severe weather, epidemics, or other emergency conditions. When such conditions exist, the Superintendent will make the official decision concerning the closing of the district's facilities. When it becomes necessary to open late or to release students early or to cancel school, district officials will post a notice on the district's web site, the following radio and television stations will be notified by school officials:

KDET (Center), Radio Stations 105.1 Lufkin, 103.9 Hemphill, and TV station Channel 19 Tyler.

Emergencies

Policies CKC, CKD

All employees should be familiar with the safety procedures for responding to emergencies, including a medical emergency. Employees should locate evacuation diagrams posted in their work areas and be familiar with shelter in place, lockout, and lockdown procedures. Emergency drills will be conducted to familiarize employees and students with safety and evacuation procedures. Each campus is equipped with an automatic external defibrillator. Fire extinguishers are located throughout all district buildings. Employees should know the location of these devices and procedures for their use.

Purchasing Procedures

Policy CH

All requests for purchases must be submitted to the appropriate supervisor on an official district purchase order (PO) form with the appropriate approval signatures. No purchases, charges, or commitments to buy goods or services for the district can be made without a PO

number. The district will not reimburse employees or assume responsibility for purchases made without authorization. Employees are not permitted to purchase supplies or equipment for personal use through the district's business office. Contact the Central Administration Office for additional information on purchasing procedures.

Name and Address Changes

It is important that employment records be kept up to date. Employees must notify the Payroll Department if there are any changes or corrections to their name, home address, contact telephone number, marital status, emergency contact, or beneficiary. Forms to process a change in personal information can be obtained from the Payroll Department.

Personnel Records

Policy DBA, GBA

Most district records, including personnel records, are public information and must be released upon request. In most cases, an employee's personal email is confidential and may not be released without the employee's permission. Employees may choose to have the following personal information withheld:

- Address
- Phone number, including personal cell phone number
- Emergency contact information
- Information that reveals whether they have family members

The choice to not allow public access to this information or change an existing choice may be made at any time by submitting a written request to the Payroll Department. New or terminated employees have 14 days after hire or termination to submit a request. Otherwise, personal information may be released to the public until a request to withhold the information is submitted or another exception for release of information under by law applies. An employee is responsible for notifying the district if he or she is subject to any exception for disclosure of personal or confidential information.

Facility Use

Policies DGA, GKD

Employees who wish to use district facilities after school hours must follow established procedures. The Central Administration Office is responsible for scheduling the use of facilities after school hours. Contact the Central Administration Office to request the use of school facilities and to obtain information on the fees charged. The District shall not permit individuals or for-profit organizations to use its facilities for financial gain.

Termination of Employment

Resignations

Policy DFE, DHB

Contract Employees. Contract employees may resign their position without penalty at the end of any school year if written notice is received at least 45 days before the first day of

instruction of the following school year. A written notice of resignation should be submitted to the Superintendent or other person designated by board action. Supervisors who have not been designated by the Board to accept resignations shall instruct the employee to submit the resignations to the Superintendent. Contract employees may resign at any other time only with the approval of the Superintendent or the Board of Trustees. Resignation without consent may result in disciplinary action by the State Board for Educator Certification (SBEC).

The principal is required to notify the superintendent of an educator's resignation within seven business days following an alleged incident of misconduct for any of the acts listed in Reports to Texas Education Agency on page 69. The superintendent will notify SBEC when an employee resigns and reasonable evidence exists to indicate that the employee has engaged in one of the same acts.

The Superintendent will notify SBEC when an employee resigns and there is evidence to indicate that the employee has engaged in such misconduct.

Noncontract Employees. Noncontract employees may resign their position at any time. A written notice of resignation should be submitted to Superintendent at least two weeks prior to the effective date. Employees are encouraged to include the reasons for leaving in the letter of resignation but are not required to do so.

The principal is required to notify the superintendent of a noncertified employee's resignation or termination within seven business days following an alleged incident of misconduct of abuse of a student, or was involved in a romantic relationship with or solicited or engaged in sexual conduct with a student or minor. The superintendent will notify TEA within seven business days of receiving a report from a principal, or knew about an employee's resignation or termination following an alleged incident of misconduct described above.

Dismissal or Nonrenewal of Contract Employees

Policy DF Series, DHB

Employees on probationary, and term contracts can be dismissed during the school year according to the procedures outlined in district policies. Employees on probationary or term contracts can be nonrenewed at the end of the contract term. Contract employees dismissed during the school year, suspended without pay, or subject to a reduction in force are entitled to receive notice of the recommended action, an explanation of the charges against them, and an opportunity for a hearing. The time lines and procedures to be followed when a suspension, termination, or nonrenewal occurs will be provided when a written notice is given to an employee. The principal is required to notify the superintendent of an educator's termination within seven business days following an alleged incident of misconduct for any of the acts listed in Reports to Texas Education Agency on page 75. The superintendent will notify SBEC when an employee is terminated and there is evidence to indicate that the employee has engaged in such misconduct. Advance notification requirements do not apply when a contract employee is dismissed for failing to obtain or maintain appropriate certification or when the employee's certification is revoked for misconduct. Information on the time lines and procedures can be found in the DF series policies that are provided to employees or are available online.

Dismissal of Noncontract Employees

Policies DCD, DP

Noncontract employees are employed at will and may be dismissed without notice, a description of the reasons for dismissal, or a hearing. It is unlawful for the district to dismiss any employee for reasons of race, color, religion, sex, national origin, age, disability, military status, genetic information, any other basis protected by law, or in retaliation for the exercise of certain protected legal rights. Noncontract employees who are dismissed have the right to grieve the termination. The dismissed employee must follow the district process outlined in this handbook when pursuing the grievance. (See *Complaints and Grievances*, page 40).

The principal is required to notify the superintendent of a noncertified employee's resignation or termination within seven business days following an alleged incident of misconduct of abuse of a student, or was involved in a romantic relationship with or solicited or engaged in sexual conduct with a student or minor. The superintendent will notify TEA within seven business days of receiving a report from a principal, or knew about an employee's resignation or termination following an alleged incident of misconduct described above.

Discharge of Convicted Employees

Policy DF

The district shall discharge any employee who has been convicted of or placed on deferred adjudication community supervision for an offense requiring the registration as a sex offender or convicted of a felony under Title 5 Penal Code if the victim was a minor.

If the offense is more than 30 years before the date the person's employment began or the person satisfied all terms of the court order entered on conviction the requirement to discharge does not apply.

Exit Interviews and Procedures

Policies DC and CY

Exit interviews will be scheduled for all employees leaving the district. Information on the continuation of benefits, release of information, and procedures for requesting references will be provided at this time. Separating employees are asked to provide the district with a forwarding address and phone number and complete a questionnaire that provides the district with feedback on his or her employment experience.

All district keys, books, property including intellectual property, and equipment must be returned upon separation from employment.

Reports to Texas Education Agency

Policies DF, DHB, DHC

Certified Employees. The resignation or termination of a certified employee must be reported to the Division of Investigations at TEA if there is evidence that the employee was involved in any of the following:

- Any form of sexual or physical abuse of a minor or any other unlawful conduct with a student or a minor
- The possession, transfer, sale, or distribution of a controlled substance
- The illegal transfer, appropriation, or expenditure of district property or funds

- An attempt by fraudulent or unauthorized means to obtain or alter any certificate or permit for the purpose of promotion or additional compensation
- Committing a criminal offense or any part of a criminal offense on district property or at a school-sponsored event
- Soliciting or engaging in sexual contact or a romantic relationship with a student or minor

The reporting requirements above are in addition to the Superintendent's ongoing duty to notify TEA when a certified employee has a reported criminal history. "Reported criminal history" means any formal criminal justice system charges and dispositions including arrests, detentions, indictments, criminal information, convictions, deferred adjudications, and probations in any state or federal jurisdiction that is obtained by a means other than the Fingerprint-based Applicant Clearinghouse of Texas (FACT).

Noncertified Employees. The voluntary or involuntary separation of a noncertified employee from the District must be reported to the Division of Investigations at TEA by the superintendent if there is evidence the employee abused or otherwise committed an unlawful act with a student or minor, was involved in a romantic relationship with a student or minor, or solicited or engaged in sexual contact with a student or minor.

Reports Concerning Court-Ordered Withholding

The district is required to report the termination of employees that are under court order or writ of withholding for child support or spousal maintenance. Notice of the following must be sent to the support recipient and the court or, in the case of child support, the Texas Attorney General Child Support Division:

- Termination of employment not later than the seventh day after the date of termination
- Employee's last known address
- Name and address of the employee's new employer, if known

Student Issues

Equal Educational Opportunities

Policies FB, FFH

In an effort to promote nondiscrimination and as required by law, Hemphill ISD does not discriminate on the basis of race, color, religion, national origin, age, sex, or disability in providing education services, activities, and programs, including Career and Technical Education (CTE) programs, in accordance with Title VI of the Civil Rights Act of 1964, as amended; Title IX of the Educational Amendments of 1972; and Section 504 of the Rehabilitation Act of 1973, as amended.

Questions or concerns about discrimination of students based on any of the reasons listed above should be directed to Stephen English, Superintendent, 1000 Milam Street, Hemphill, Texas 75948, stephen.english@hemphillisd.net, 409-787-3371, the district Title IX coordinator for students. Questions or concerns about discrimination on the basis of a disability should be directed to Stephen English, Superintendent, 1000 Milam Street, Hemphill, Texas 75948, stephen.english@hemphillisd.net, 409-787-3371, the district ADA/Section 504 coordinator for students. All other questions or concerns relating to discrimination based on any other reasons should be directed to the Superintendent.

Student Records

Policy FL

Student records are confidential and are protected from unauthorized inspection or use. Employees should take precautions to maintain the confidentiality of all student records.

The following people are the only people who have general access to a student's records:

- *Parents: Married, separated, or divorced unless parental rights have been legally terminated and the school has been given a copy of the court order terminating parental rights
- *The student: The rights of parents transfer to a student who turns 18 or is enrolled in an institution of post-secondary education. A district is not prohibited from granting the student access to the student's records before this time.
- *School officials with legitimate educational interests

The student handbook provides parents and students with detailed information on student records. Parents or students who want to review student records should be directed to the campus principal for assistance.

Parent and Student Complaints

Policy FNG

In an effort to hear and resolve parent and student complaints in a timely manner and at the lowest administrative level possible, the Board has adopted orderly processes for handling complaints on different issues. Any campus office or the Superintendent's Office can provide parents and students with information on filing a complaint.

Parents are encouraged to discuss problems or complaints with the teachers or the appropriate administrator at any time. Parents and students with complaints that cannot be resolved to their satisfaction should be directed to the campus principal. The formal complaint process provides parents and students with an opportunity to be heard up to the highest level of management if they are dissatisfied with a principal's response.

Administering Medication to Students

Policies FFAC, FFAF

Only designated employees may administer prescription medication, nonprescription medication, and herbal or dietary supplements to students. Exceptions apply to the administration of medication for respiratory distress, medication for anaphylaxis (e.g., EpiPen), opioid antagonists, and medication for diabetes management, if the medication is administered in accordance with district policy and procedures. A student who must take any other medication during the school day must bring a written request from his or her parent and the medicine, in its original, properly labeled container. Contact the principal or school nurse for information on procedures that must be followed when administering medication to students.

Dietary Supplements

Policies DH, FFAC

District employees are prohibited by state law from knowingly selling, marketing, or distributing a dietary supplement that contains performance-enhancing compounds to a student with whom the employee has contact as part of his or her school district duties. In addition,

employees may not knowingly endorse or suggest the ingestion, intranasal application, or inhalation of a performance-enhancing dietary supplement to any student.

Psychotropic Drugs

Policy FFAC

A psychotropic drug is a substance used in the diagnosis, treatment, or prevention of a disease or as a component of a medication. It is intended to have an altering effect on perception, emotion, or behavior and is commonly described as a mood or behavior-altering substance.

District employees are prohibited by state law from doing the following:

- Recommending that a student use a psychotropic drug
- Suggesting a particular diagnosis
- Excluding from class or school-related activity a student whose parent refuses to consent to a psychiatric evaluation or to authorize the administration of a psychotropic drug to a student

Student Conduct and Discipline

Policies in the FN series and FO series

Students are expected to follow the classroom rules, campus rules, and rules listed in the Student Handbook and Student Code of Conduct. Teachers and administrators are responsible for taking disciplinary action based on a range of discipline management strategies that have been adopted by the district. Other employees that have concerns about a particular student's conduct should contact the classroom teacher or campus principal.

Student Attendance

Policy FEB

Teachers and staff should be familiar with the district's policies and procedures for attendance accounting. These procedures require minor students to have parental consent before they are allowed to leave campus. When absent from school, the student, upon returning to school, must bring a note signed by the parent that describes the reason for the absence. These requirements are addressed in campus training and in the Student Handbook. Contact the campus principal for additional information.

Bullying

Policy FFI

Bullying is defined by TEC 37.0832.

All employees are required to report student complaints of bullying, including cyberbullying to their immediate supervisor. The district's policy includes definitions and procedures for reporting and investigating bullying of students is reprinted below:

Bullying Prohibited The District prohibits bullying as defined by this policy. Retaliation against anyone involved in the complaint process is a violation of District policy.

Definition Bullying occurs when a student or group of students engages in written or verbal expression or physical conduct that:

1. Will have the effect of physically harming a student, damaging a student's property, or placing a student in reasonable fear of harm to the student's person or of damage to the student's property; or
2. Is sufficiently severe, persistent, or pervasive that the action or threat creates an intimidating, threatening, or abusive educational environment for a student.

Examples Bullying of a student may include hazing, threats, taunting, teasing, confinement, assault, demands for money, destruction of property, theft of valued possessions, name calling, rumor spreading, and ostracism.

Timely Reporting Reports of bullying shall be made as soon as possible after the alleged act or knowledge of the alleged act. A failure to promptly report may impair the District's ability to investigate and address the prohibited conduct.

Reporting Procedures Any student who believes that he or she has experienced bullying or believes that another student has experienced bullying should immediately report the alleged acts to a teacher, counselor, principal, or other District employee. A report may be made orally or in writing.

Notice of Report Any District employee who receives notice that a student has or may have experienced bullying shall immediately notify the campus principal or designee.

Investigation of Report If a report is made orally, the campus principal or designee shall reduce the report to written form. The campus principal or designee shall determine whether the allegations in the report, if proven, would constitute prohibited conduct as defined by policy FFH, and if so proceed under that policy instead. The campus principal or designee shall conduct an appropriate investigation based on the allegations in the report. The campus principal or designee shall promptly take interim action calculated to prevent bullying during the course of an investigation, if appropriate.

Concluding the Investigation Absent extenuating circumstances, the investigation should be completed within ten District business days from the date of the report; however, the campus principal or designee shall take additional time if necessary to complete a thorough investigation. The campus principal or designee shall prepare a written report of the investigation, including a determination of whether bullying occurred, and send a copy to the Superintendent or designee.

District Action If the results of an investigation indicate that bullying occurred, the District shall promptly respond by taking appropriate disciplinary or corrective action reasonably calculated to address the conduct in accordance with the District's Student Code of Conduct. [For information on student transfers due to bullying, see FDB]. The District may take action based on the results of an investigation, even if the District concludes that the conduct did not rise to the level of bullying under this policy.

Confidentiality To the greatest extent possible, the District shall respect the privacy of the complainant, persons against whom a report is filed, and witnesses. Limited disclosures may be necessary in order to conduct a thorough investigation.

Appeal A student who is dissatisfied with the outcome of the investigation may appeal through FNG (Local), beginning at the appropriate level.

Records Retention Retention of records shall be in accordance with CPC (Local).

Access to Policy Information regarding this policy shall be distributed annually to District employees and included in the student handbook. Copies of the policy shall be readily available at each campus and the District's administrative offices.

Hazing

Policy FNCC

Students must have prior approval from the principal or designee for any type of "initiation rites" of a school club or organization. While most initiation rites are permissible, engaging in or permitting "hazing" is a criminal offense. Any teacher, administrator, or employee who observes a student engaged in any form of hazing, who has reason to know or suspect that a student intends to engage in hazing, or has engaged in hazing must report that fact or suspicion to the designated campus administrator.

Index

A

- Activity Funds, 74
- Administering medication to students, 79 – 80
- Administration, 12 – 13
- Alcohol and drug abuse prevention, 70 – 71
- Alcohol and drug testing, 27
- Arrests and convictions, 68 – 69
- Asbestos management plan, 73
- Assault leave, 44
- Associations, 72
- At-will employment, 29
- Automatic payroll deposits, 31

B

- Background checks, 68
- Bad weather (Emergency) closing, 74
- Benefits
 - Cafeteria plan, 34
 - Leave, 35 – 46
 - Retirement, 35
 - Supplemental insurance, 34
 - Worker's compensation, 35
- Bereavement leave, 44
- Board of Trustees
 - Information, 8
 - Meeting schedule, 8
 - Members, 8
- Breaks, 29

Breast milk, 29
Building (Facility) use, 75
Bullying, 80 - 82

C

Cafeteria plan benefits, 34
Certification
 Health and safety training, 28
 Parent notification, 29 – 30
Child abuse reporting, 62 – 63
Classroom unattended, 21
Code of ethics, 52 – 54
Committees, 18 – 19
Compensation, 31 – 33
Complaints
 Employee, 47 –51
Compliance coordinators, 12, 57
Compliance with a Subpoena, 44 – 45
Conduct and welfare, 51 – 54
Conflict of interest, 71
Contract
 Employment, 25 – 26
 Noncertified employees, 26
 Nonrenewal, 75 – 76
Copyrighted materials, 72
Court appearances, 44 – 45
Crime reporting, 64
Criminal history, 68

D

Dietary supplements, 79 – 80
Directories
 Helpful contacts, 12 – 20
Discrimination
 Employee, 25
 Student, 78
Dismissal
 Contract employees, 75 – 77
 Noncontract employees, 76 – 77
District
 Communications, 12 – 20
 Information, 10
 Map, 24
 Mission statement, 7
Dress and Grooming, 52
Driver's license, 27 – 28
Drug testing, 27
Drug-abuse prevention, 70
Drugs, psychotropic, 80

E

E-cigarettes, 70 – 71

- Electronic communications, 66 – 68
- Emergencies, 74
- Emergency Care Form, 4
- Employee
 - Bonus Program, 33
 - Conduct and welfare, 51 - 54
 - Involvement, 30
- Employment
 - After retirement, 25
 - At-will, 26
 - Authorization documents, 27
 - Contract, 26
 - Term, 26
 - Noncontract, 26
 - Probationary, 26
 - Involvement, 30
- Equal opportunity, 25
 - Employment, 25 – 27
- Every Student Succeeds, 29 – 30
- Exit interviews, 77

F

- Faculties, 12 – 20
- Family and medical leave, 39 – 41
- Firearms, 73
- Form I-9, 27
- Fraud, 71

G

- General Policies procedures, 21 - 23, 74 - 75
- Gifts and favors, 71 – 72
- Grievances, 47 – 51

H

- Handbook
- Harassment
 - Employee, 55 – 58
 - Student, 59 – 63
- Hazing, 82
- Health Safety Training, 28
- Health insurance, 34
- Helpful contacts, 12 – 13

I

- Insurance
 - Supplemental, 34
 - Unemployment, 35
- Internet use, 64 – 68
- Introduction, 2

J

- Job vacancy announcements, 25

Jury duty, 44

L

Leave, 35 – 46

- Assault, 44

- Benefits, 31 – 44

- Bereavement, 44

- Complaints Level I, II, III, 47 – 51

- Court appearances, 44 – 45

- Discretionary, 37

- Family and medical, 39 – 41

- Jury duty, 44

- Local, 38

- Medical certification, 36 – 37

- Military, 45

- Nondiscretionary, 37

- Personal, 37 – 38

- Proration, 37

- Religious observance, 45

- Sick, 38 – 39

- Temporary disability, 41 – 42

- Truancy court appearance, 45

- Workers' compensation, 43 – 44

M

Medication, 79

Military leave, 45

Mission statement, 7

N

Name and address changes, 75

Nonrenewals, 76

Nursing mothers, 29

O

Organizational chart, 9

Organization of school staff, 10

Outside employment, 30

Overtime, 32

P

Parent and student complaints, 79

Parent notification, 29 – 30

Paychecks, 31

Payroll

- Automatic deposits, 31

- Deductions, 32

- Schedule, 31 – 32

Performance evaluation, 30

Personal leave, 37 – 38

Personnel records, 75

Pest control treatment, 74

- Playground supervision, 21 – 22
- Possession of firearms and weapons, 73
- Psychotropic drugs, 80
- Public information, 68
- Purchasing procedures, 74 – 75

R

- Reassignments, 28
- Receipt, 3
- Religious observance, 45
- Resignations, 75 – 76
 - Contract employees, 75 – 76
 - Noncontract employees, 76
- Retaliation, 55 – 58
- Retirement
 - Benefits, 35
 - Employment after, 25

S

- Safety, 72 – 73
- Salaries, 31 – 34
- School
 - Calendar, 11
 - Closing, 74
 - Directory, 12 – 20
- Scope and sequence, 64
- Searches, 27

- Sexual harassment
 - Student, 59 – 63
- Sick leave, 35 – 43
- Special Services Employees, 20
- Staff development, 30 – 31
- Standards of conduct, 51 – 54
- Student
 - Attendance, 80
 - Bullying, 80 – 82
 - Complaints, 79
 - Dietary supplements, 79 – 80
 - Discipline, 80
 - Equal educational opportunities, 78
 - Harassment, 59 – 62
 - Hazing, 82
 - Medication, 79 – 80
 - Records, 79

T

- Teacher retirement, 35
- Termination, 75 – 77
 - Discharge of convicted employees, 77

- Dismissal during the contract term, 75 – 78
- Exit interviews, 77 – 78
- Noncontract employees, 77
- Nonrenewal, 76 – 77
- Resignations, 75 – 76
- Teacher school day, 21
- Teacher travel expense, 33 – 34 , 88
- Technology resources, 64 – 68
- Text messaging, 34
- Tobacco
 - Products, 70 – 71
 - Use, 70 – 71
- Training
 - Safety, 72 - 73
 - Staff development, 30 – 31
- Transfers, 28
- Travel expenses, 33 – 34 , 88
- Truancy court appearances, 45
- Tutoring, 30

U

- Unemployment insurance, 35
- Unlawful acts, 68 – 69

V

- Vacancy announcements, 25
- Visitors, 73

W

- Wages, 31 – 34
- Weapons, 73
- Whistleblower Act, 64
- Work schedule, 28 – 29
- Workers' compensation benefits, 35
- Workload, 28 – 29

HEMPHILL INDEPENDENT SCHOOL DISTRICT
ITEMIZATION OF EXPENSES

EMPLOYEE _____ CAMPUS _____

MEETING ATTENDED _____

LOCATION OF MEETING _____

DATE DEPARTED _____ TIME _____ A.M. P.M.

DATE RETURNED _____ TIME _____ A.M. P.M.

TRANSPORTATION _____ MILES @ 40.5¢ = \$ _____

	(Maximum Amt) <u>Reimbursable Amt</u>	Receipts required for all expenses
Meals:		
Date: _____	*Breakfast (\$ 9) _____	Lodging = \$ _____
	Lunch (\$12) _____	
	Dinner (\$15) _____	Meals = \$ _____
Date: _____	Breakfast (\$ 9) _____	Registration = \$ _____
	Lunch (\$12) _____	
	Dinner (\$15) _____	Misc(Specify)= \$ _____
Date: _____	Breakfast (\$ 9) _____	Total = \$ _____
	Lunch (\$12) _____	
	Dinner (\$15) _____	P. O. # _____
Date: _____	Breakfast (\$ 9) _____	Advanced Travel Allowance \$ _____
	Lunch (\$12) _____	Total Expended \$ _____
	Dinner (\$15) _____	Amount Returned \$ _____
Date: _____	Breakfast (\$ 9) _____	Additional Expense Money Needed \$ _____
	Lunch (\$12) _____	(Attach P.O.)
	Dinner (\$15) _____	

Total Meal(s) Expenses = _____

*Breakfast will be reimbursed only on overnight trips

SIGNED: _____

EMPLOYEE/TEACHER

PRINCIPAL/SUPERVISOR

SUPERINTENDENT